

ARTICLE

Received 17 Jul 2016 | Accepted 19 Dec 2016 | Published 30 Jan 2017

DOI: 10.1038/ncomms14332

OPEN

Bacillus subtilis biofilm extends *Caenorhabditis elegans* longevity through downregulation of the insulin-like signalling pathway

Verónica Donato^{1,*}, Facundo Rodríguez Ayala^{1,*}, Sebastián Cogliati^{1,*}, Carlos Bauman¹, Juan Gabriel Costa¹, Cecilia Leñini¹ & Roberto Grau¹

Beneficial bacteria have been shown to affect host longevity, but the molecular mechanisms mediating such effects remain largely unclear. Here we show that formation of *Bacillus subtilis* biofilms increases *Caenorhabditis elegans* lifespan. Biofilm-proficient *B. subtilis* colonizes the *C. elegans* gut and extends worm lifespan more than biofilm-deficient isogenic strains. Two molecules produced by *B. subtilis* — the quorum-sensing pentapeptide CSF and nitric oxide (NO) — are sufficient to extend *C. elegans* longevity. When *B. subtilis* is cultured under biofilm-supporting conditions, the synthesis of NO and CSF is increased in comparison with their production under planktonic growth conditions. We further show that the prolongevity effect of *B. subtilis* biofilms depends on the DAF-2/DAF-16/HSF-1 signalling axis and the downregulation of the insulin-like signalling (ILS) pathway.

¹Departamento de Microbiología, Facultad de Ciencias Bioquímicas y Farmacéuticas, Universidad Nacional de Rosario, CONICET, Rosario 2000, Argentina. *These authors contributed equally to this work. Correspondence and requests for materials should be addressed to R.G. (email: robertograu@fulbrightmail.org).

During the last 30 years, human life expectancy has significantly increased worldwide http://www.who.int/gho/publications/world_health_statistics/2015. Between 1990 and 2012, humans (males and females) born in low- and high-income countries have gained 9.05 and 4.25 years in life expectancy, respectively http://www.who.int/gho/publications/world_health_statistics/2015, which has been attributed to a plethora of genetic and environmental factors^{1,2}. In mammals, the beneficial bacteria residing in the host intestine (that is, gut or commensal flora) play a crucial role in immune system development, tissue morphogenesis and aging^{3–8}. Beneficial effects of the gut flora on host physiology, including slowing of aging, might be improved with the incorporation of probiotic bacteria into the host diet. Probiotics are live organisms that have a beneficial effect on host health when they are administered or present in adequate quantities^{9,10}. However, the mechanisms causing potential prolongevity effects of beneficial bacteria on different hosts remain poorly understood^{10–15}.

Microbial biofilms are three-dimensional structured communities of adherent microorganisms encased in a self-produced extracellular matrix, containing networks of channels for nutrient supply and long-distance cell-to-cell communication^{16,17}. Bacteria living in biofilms are physiologically very distinct from their planktonic counterparts, and they function as a cooperative consortium more similar to that of multicellular organisms than a unicellular organism^{16,18,19}. The crucial role of biofilms in the success of different pathogenic bacteria in infecting different hosts is well documented²⁰, but whether biofilms influence the interaction between beneficial bacteria and their host is largely unknown^{10,16}.

Bacillus subtilis is a model beneficial bacterium with the ability to display many distinct cell types under developmental control, including the ability to form robust and sophisticated biofilms^{21–27}. Interestingly, a recent study showed that planktonic *B. subtilis* modulates the longevity of the bacteriovorous nematode and model organism *Caenorhabditis elegans* independent of its role as a food source^{21,28}. Worms fed on planktonic *B. subtilis* cells live longer (an approximately 15% increase in lifespan) than worms grown in the presence of other food sources, that is, *E. coli*^{28,29}. Because of the limited understanding of the effect of biofilm formed by beneficial gut bacteria on host health, we determined whether the biofilm of *B. subtilis* might represent a novel anti-aging agent for improving host longevity.

Results and Discussion

***C. elegans* longevity is increased by undomesticated *B. subtilis*.** The various studies that have reported interactions of *B. subtilis* with *C. elegans* utilized genetically modified laboratory *B. subtilis* (domesticated) strains derived from the wild (undomesticated) Marburg isolate NCIB3610. However, these laboratory strains (that is, strains 168, JH642 and PY79; refs 30–32 are known to harbour several initially inadvertent mutations that affect collective behaviours (that is, social-surface motility and biofilm formation)^{31,32} that might play an important role during bacteria–host interactions.

To answer this question, we initially compared the lifespan effects produced by the wild strain NCIB3610 (ref. 31) and its isogenic derivative, the domesticated JH642 strain³³ (Supplementary Table 1) on *C. elegans*. It has been noted that in contrast to the susceptibility of vegetative cells, *B. subtilis* spores survive the transit through the pharynx and germinate in the worm intestine^{34,35}. Therefore, for all the subsequent experiments, the sporulated form of *B. subtilis* was provided as the worm food source to correlate the effects on worm lifespan with the activity

of live bacteria^{10,21}. *C. elegans* fed on domesticated *B. subtilis* cells showed an extended longevity compared with the effect of OP50 *E. coli* cells when used as a food source (Fig. 1a and Supplementary Table 2). The survival of worms fed on JH642 cells increased by an average of 23.56% (average survival, 25.02 days; 95% confidence interval (CI): 23.39–26.65) compared with strain OP50 (average survival, 20.25 days; 95% CI: 18.52–21.97) when used as a food source (Supplementary Table 2). Interestingly, the lifespan effect on *C. elegans* was significantly more pronounced with a statistically right-shifted survival curve ($P=0.00$) by log-rank test when the worms were fed on undomesticated *B. subtilis* cells (strain NCIB3610) (Fig. 1a and Supplementary Table 2). In this case, NCIB3610 cells increased the worm longevity by an average of 52.59% compared with the lifespan effect produced by OP50 *E. coli* cells (average value, 30.90 days; 95% CI: 29.14–32.67) (Supplementary Table 2). The lifespan of *C. elegans* also increased by an average of 59.51% (average value, 32.30 days; 95% CI: 30.68–33.90; equality, $P=0.00$ by log-rank test) when fed on another undomesticated *B. subtilis* strain (that is, the probiotic *B. subtilis* natto strain RG4365, Supplementary Table 1)^{22,27}. The different effects of these bacterial strains on worm survival cannot be attributed to physiological differences between the domesticated and undomesticated strains because both types of bacterial cells displayed similar efficiencies of spore germination, vegetative growth and spore formation (Supplementary Fig. 1a–c). However, the possibility exists that the observed differential effects on worm survival were due to changes in the mechanical/physical properties of both types of spores. In this case, the worm grinder may not be able to efficiently break the spores of undomesticated cells, leading to higher colonization levels and/or reduced nutritional availability, which might explain the observed longevity effects (Fig. 1a). To test this possibility, we analysed and compared the robustness and resistance of JH642 and NCIB3610 spores. As shown in Supplementary Fig. 1d, spores derived from domesticated and undomesticated cells are indistinguishable one from the other in their resistance to different physico-chemical treatments such as sonication, low and high pH exposure, and lysozyme and protease treatments. Accordingly, several physiological parameters of *C. elegans*, such as its chemotactic behaviour (in response to the different bacterial food sources), growth rate, body size, postembryonic development and egg-laying proficiency were not affected when fed on any of the selected bacterial strains (that is, OP50, JH642 and NCIB3610 cells; Supplementary Fig. 1e–i). Additionally, we used FUDr in the lifespan assays which was previously shown to be a potential co-founder for *C. elegans* lifespan studies³⁶. To test this possibility, we analysed the lifespan effects produced by *B. subtilis* NCIB3610 cells on N2 worms either in the presence or the absence of FUDr, as well as the effect of FUDr in *B. subtilis* biofilm formation proficiency. As shown in Supplementary Fig. 2a, and Supplementary Table 3, the worm lifespan increase produced by *B. subtilis* NCIB3610 cells was essentially the same in the presence (average value, 30.90 days; 95% CI: 29.14–32.67; equality, $P=0.00$ by log-rank test) or absence of FUDr (average value, 31.07; 95% CI: 29.45–32.78). Accordingly, the *in vitro* and *in vivo* biofilm formation proficiency of *B. subtilis* NCIB3610 cells was not affected by FUDr (Supplementary Fig. 2b). Overall, these results rule out potential drug–bacterial strain interaction, variations in food preference and/or food availability between the different bacterial food sources as reasons for the observed differences in *C. elegans* lifespan (Fig. 1a and Supplementary Table 2).

Lifespan and stress resistance are interrelated^{1,2}. Extended longevity of *C. elegans* correlates with enhanced worm resistance

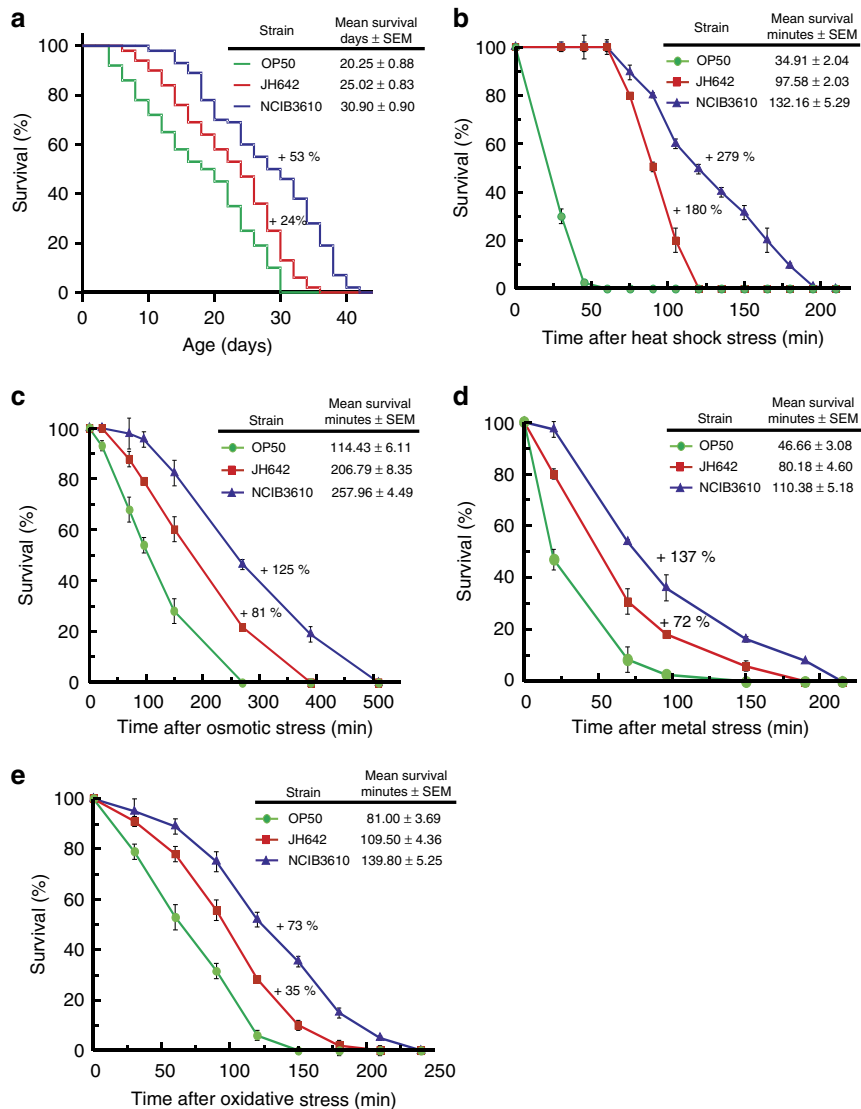


Figure 1 | Undomesticated *B. subtilis* extends *C. elegans* survival. (a) *C. elegans* longevity fed on *B. subtilis* cells. Fifty late L4/young-adult-stage N2 worms were fed either on wild-type spores of domesticated JH642 (red) or undomesticated NCIB3610 (blue) *B. subtilis* on NGM agar plates, and survival was monitored. (b) Thermotolerance of *C. elegans* fed on *B. subtilis*. Thirty late L4/young-adult-stage worms on NGM plates fed either on *B. subtilis* JH642 (red) or NCIB3610 (blue) on NGM plates were shifted from 20 to 34 °C, and the mean survival was calculated. (c–e) Effects of different stresses on *C. elegans* survival. Thirty late L4/young-adult-stage worms were fed either on wild-type spores of domesticated JH642 (red) or undomesticated NCIB3610 (blue) *B. subtilis* on NGM agar plates, transferred to 24-well plates containing 200 mM NaCl (for osmotic stress, c), 50 μ M cadmium (for metal stress, d), 25 mM H₂O₂ (for oxidative stress, e). At 30 min intervals, the worms were scored for signs of life. OP50 *E. coli* (green) was used as a control. Each graph (a–e) is the average \pm s.e.m. ($n = 3$), and the survival increase is expressed as a percentage of the total number of worms fed on OP50 *E. coli*.

against different biological, physical and chemical stressors^{37,38}. In this sense, in accordance with the increase in the lifespan effect produced by undomesticated *B. subtilis*, we found a strong positive effect on the thermotolerance of *C. elegans*. As shown in Fig. 1b, *C. elegans* fed on NCIB3610 cells showed higher resistance and survival to heat shock compared with the protective effects produced by domesticated JH642 (using OP50 cells as a control). When *C. elegans* was shifted from its routine growth temperature of 20 to 34 °C, worms fed either on undomesticated or domesticated *B. subtilis* cells lived 278.57% (average survival, 132.16 min) and 179.52% (average survival, 97.58 min) longer, respectively, than did worms fed on OP50 cells (average survival, 34.91 min; Fig. 1b and Supplementary Table 2). Accordingly, we did not observe any significant FUDR interference on the

thermotolerance behaviour of *C. elegans* when fed on NCIB3610 cells (Supplementary Fig. 2c and Supplementary Table 3).

To confirm the higher beneficial effects of undomesticated *B. subtilis* cells over domesticated *B. subtilis* cells on worm survival, we measured the lifespan of N2 worms subjected to injuries other than heat shock (that is, osmotic, heavy metal and oxidative stresses). In all the analysed situations, *C. elegans* fed on NCIB3610 *B. subtilis* showed a significant increase in survival (equality, $P < 0.001$ by log-rank test) compared with the survival of worms fed on JH642 or OP50 cells (Fig. 1c–e). Taken together, these results indicate that wild (undomesticated) *B. subtilis* strains are significantly more beneficial and efficient than domesticated *B. subtilis* in protecting and prolonging *C. elegans* lifespan (Fig. 1, Table 1A and Supplementary Table 2).

Table 1 | Summary of all aging experiments shown in this work.

C. elegans strain (genetic background)	Bacterial strain (genetic background) (relevant phenotype)	Mean survival days + s.e.m.	Median survival days (confidence interval with 95%)	P-value	Survival increase (%)
A N2 (wt)	OP50 (wt)	19.68 ± 0.77	18 (17–19)		Control
	JH642 (wt)	25.02 ± 0.83	26 (24–28)	0.0004	27.13
	NCIB3610 (wt)	30.61 ± 0.93	32 (29–34)	0.00	55.54
B N2	NCIB3610	30.61 ± 0.93	32 (29–34)		Control
	RG3603 (Δ bslA) (deficient in biofilm formation)	22.48 ± 0.87	22 (22–24)	1E ⁻⁰⁷	-26.56
	RG3610 (Δ nos) (deficient in NO production)	25.94 ± 1.02	26 (24–29)	0.0022	-15.26
	RG4010 (Δ csf) (deficient in CSF production)	26.48 ± 0.92	27 (24–29)	0.0085	-13.49
	RG3611 (Δ nos Δ bslA) (deficient in NO production and biofilm formation)	20.10 ± 0.79	21 (19–23)	0	-34.34
	RG3405 (Δ csf Δ bslA) (deficient in CSF production and biofilm formation)	20.54 ± 0.85	22 (19–25)	0	-32.90
	LC3601 (Δ nos Δ csf) (deficient in NO and CSF production)	23.85 ± 0.92	23 (20–25)	1E ⁻⁰⁶	-22.08
LC3611 (Δ nos Δ bslA Δ csf) (deficient in NO and CSF production and biofilm formation)	17.43 ± 0.86	18 (17–19)	0	-43.06	
C CF1038 (<i>daf-16/mu86</i>)	OP50	13.87 ± 0.52	12 (11–13)		Control
	JH642	15.60 ± 0.68	12 (11–13)	0.007	12.47
	NCIB3610	17.36 ± 0.74	16 (14–17)	0.00016	25.16
D PS3551 (<i>hsf-1/sy441</i>)	OP50	11.97 ± 0.58	10 (9–11)		Control
	JH642	13.85 ± 0.56	12 (11–13)	3.5E ⁻⁰⁵	15.71
	NCIB3610	16.8 ± 0.60	16 (14–17)	0	40.35
E CB1370 (<i>daf-2/e1370</i>)	OP50	31.82 ± 1.68	25 (23–27)		Control
	NCIB3610	34.84 ± 1.81	28 (24–32)	0.02	9.49

Experimental conditions are described in the 'Methods' section. Each data set in the same line (mean survival, median survival, P value and survival increase) was calculated using the log-rank and Kaplan-Meier tests and represents the average value from all the experiments described in this work that involved the same experimental conditions and the same pair of worm-bacterial strains. Shown data are the mean values of the experimental data showed in Figs 1a and 3b,d; Figs 4a and 5a,b and 7a; Supplementary Figs 4c,j, 5 and 6 for (A); Figs 3b and 4a; Figs 5a,c and 7a and Supplementary Fig. 5 for (B); Figs 6a and 7b for (C); Figs 6b and 7c for (D) and Fig. 8a for (E).

C. elegans longevity depends on B. subtilis gut colonization. To shed light on the reasons for the differences in the magnitude of the lifespan effects produced by domesticated and undomesticated *B. subtilis*, we analysed the ability of each cell type to grow and colonize the worm intestine^{14,15,34}. Our initial approach was to measure the intestinal activity of a reporter gene harboured by the bacterium used as the worm food source. Therefore, we fed *C. elegans* on NCIB3610 and JH642 cells that harboured a reporter of β -galactosidase activity³⁰ driven by the bacterium promoter of the surfactin operon (Supplementary Table 1). As shown in Fig. 2a, cellular extracts obtained from worms fed on both types of *B. subtilis* cells showed β -galactosidase activity derived from the reporter $p_{srf-lacZ}$ fusion, a finding that strongly suggests that both types of spores (JH642 and NCIB3610) were able to germinate (spores are metabolically inactive) in *C. elegans* gut. Interestingly, the pattern of β -galactosidase expression obtained from the undomesticated cells was significantly higher than that obtained from the worms fed on domesticated cells; peaks of 200 and 1,000 Miller units (MU) of β -galactosidase activity were reached after 70 h of gut colonization with JH642 and NCIB3610 isogenic strains harbouring the *lacZ* reporter-fusion system, respectively (Fig. 2a). The difference in the level of expression of the $p_{srf-lacZ}$ reporter fusion could be due to a different spore germination or bacterial growth rate, to the differential expression of the surfactin promoter in domesticated and undomesticated cells and/or to a different level of bacterial gut colonization (number of

B. subtilis cells/worm). To distinguish between these possibilities, we measured the germination rates, the outgrowth and the β -galactosidase expression driven by the $P_{srf-lacZ}$ fusion in domesticated and undomesticated *B. subtilis* cells inoculated in nematode growth medium (NGM). As shown in Supplementary Fig. 3, the kinetics of spore germination, the vegetative growth rates and the β -galactosidase expression from the reporter $p_{srf-lacZ}$ fusion of cells grown in liquid and solid NGM did not significantly differ between the domesticated and undomesticated *B. subtilis* cells (Supplementary Fig. 3a–c). These results suggest that the different levels of intestinal β -galactosidase activity derived from the two types of utilized *B. subtilis* cells (Fig. 2a) were due to the different levels of bacterial worm gut colonization.

Similarly, the fluorescence signal originated from the gut of worms fed on undomesticated *B. subtilis* cells harbouring a reporter gene of GFP expression (*bslA-gfp*) (Supplementary Table 1) was significantly higher than the originated from worms fed on domesticated *B. subtilis* cells (Fig. 2b). The observed differences in GFP expression were not due to differences in the growth rate or other physiological parameter between both types of *B. subtilis* strains because the GFP expression levels displayed by both types of cells were indistinguishable from one another under planktonic growth conditions on NGM agar plates (Supplementary Fig. 3d). Therefore, these results demonstrate the proficiency of *B. subtilis*, as a commensal organism, to complete an entire cell cycle in

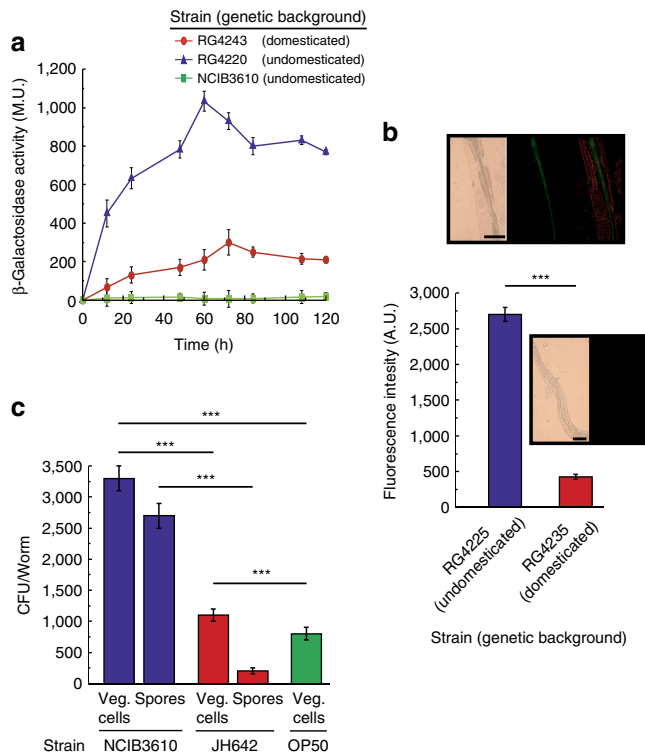


Figure 2 | Proficiency of *B. subtilis* gut colonization in *C. elegans* intestine.

(a) Expression of surfactin operon in worm intestine. Thirty late L4/young-adult-stage worms were allowed to develop on NGM agar plates seeded with OP50 *E. coli*, washed and transferred to fresh NGM plates containing JH642- or NCIB3610-derived isogenic RG4243 (red circles) and RG4220 (blue circles) strains, respectively (Supplementary Table 1) harbouring the $P_{srf-lacZ}$ reporter gene. Determination of β -galactosidase activity was performed in worm extracts. The β -galactosidase activity, expressed as Miller units (MU) over time (h) is shown. $***P < 0.001$ (analysis of variance (ANOVA) with Bonferroni test). (b) *B. subtilis* biofilm formation in *C. elegans* gut. Thirty late L4/young-adult-stage worms were allowed to develop on NGM agar plates seeded with OP50 *E. coli*, washed and transferred to fresh NGM plates containing NCIB3610- or JH642-derived isogenic RG4225 (blue) and RG4235 (red) strains, respectively, carrying an integrated *bslA::gfp* reporter fusion (Supplementary Table 1). The worms were taken and imaged by fluorescence microscopy. Fluorescence intensity is indicated as arbitrary units (A.U.) per worm, and error bars show the mean \pm ($n = 3$). $***P < 0.001$ (ANOVA with Bonferroni test). The inserts shown are epifluorescence micrographs of typically stained N2 *C. elegans* fed on GFP-expressing domesticated and undomesticated *B. subtilis*. The fluorescence images were superimposed to differential interference contrast (DIC) images to depict the localization of the labels within the cells. Scale bar, 20 μ m. (c) Worm intestine colonization by *B. subtilis*. Hundred late L4/young-adult-stage worms were allowed to develop on NGM agar plates seeded with OP50 *E. coli*, washed, transferred to fresh NGM plates containing new OP50 cells (green) or spores of the strains JH642 (red) or NCIB3610 (blue). The number of *E. coli* or *B. subtilis* cells (spores and vegetative forms) was measured in the worm gut. Error bars show the mean \pm ($n = 3$). $***P < 0.001$ (ANOVA with Bonferroni test).

the intestine of *C. elegans* as was previously reported for this bacterium in other animal models^{39–41}. In addition, wild *B. subtilis* was hypothesized to be a better colonizer of the worm intestine than domesticated *B. subtilis* (Fig. 2a,b and Supplementary Fig. 3e). Supporting this hypothesis, the number of NCIB3610 cells (spores plus vegetative cells) recovered from the worm gut was significantly higher (4-fold higher) than

the intestinal number of JH642 cells (spores plus vegetative cells) (Fig. 2c).

To confirm that undomesticated *B. subtilis* is a better gut colonizer than domesticated *B. subtilis*, we measured the levels of bacterial gut colonization and the lifespan effect on worms in which one bacterial type (NCIB3610 or JH642) used as a food source for the initial colonization ('bacterial pulse') was switched ('bacterial chase') with other type of bacteria (OP50, JH642, NCIB3610 or a mixture of them; Supplementary Fig. 4). Overall, the results of the food switching experiments confirmed the higher ability of NCIB3610 cells to colonize and persist in the worm intestine compared with OP50 and domesticated JH642 cells. In addition, each level of worm gut colonization produced by cells of the strains OP50 (Supplementary Fig. 4a,h), JH642 (Supplementary Fig. 4c,i), NCIB3610 (Supplementary Fig. 4b,j) or mixtures of them (Supplementary Fig. 4d–g,k–n) correlates with the lifespan effect produced by these strains when individually used to feed *C. elegans* during its entire lifespan. As observed in Supplementary Fig. 4o,p, the presence of a higher number of NCIB3610 cells in the gut corresponded with the highest worm longevity (Supplementary Table 4). These results demonstrated that wild (undomesticated) *B. subtilis* is better suited to colonize and persist in the intestinal tract of *C. elegans* and to improve its longevity compared with domesticated *B. subtilis* and OP50 cells.

Interestingly, a previous report indicated that only a supply of vegetative *B. subtilis*, and not spores, was able to extend the NO-dependent longevity of *C. elegans*²⁸. The failure of the dormant spores to increase the longevity of *C. elegans* was attributed to the inability of these spores to germinate and initiate the *de novo* synthesis of NO²⁸. However, our study used sporulated *B. subtilis* that was able to germinate, grow, colonize the worm intestine, thus extending the worm longevity (Fig. 2). Consistent with our results, other reports have previously indicated that *B. subtilis* spores are better suited to survive the transit from the worm pharynx to the intestine than vegetative cells, which are primarily destroyed during this process^{34,35,42}. We attribute this discrepancy with the mentioned work²⁸ to the presence of unnoticed genetic differences in the utilized *B. subtilis* strain (that is, differences in the efficiencies of spore germination and/or outgrowth). Supporting this interpretation, the existence of important genetic differences between domesticated *B. subtilis* strains used in different laboratories around the world has been previously reported^{32,43}.

The biofilm is key to colonize *C. elegans* and extend its lifespan.

The ability to adhere and form a multicellular structure called a pellicle or biofilm constitutes an attribute of bacteria that is key to their success in colonization and persistence in a particular niche^{16–20}. In studies of host–bacteria interactions, the biofilm formation proficiency of both pathogenic and beneficial bacteria is believed to play a crucial role^{44–52}. Because of the significant difference between domesticated and undomesticated *B. subtilis* strains in their biofilm formation proficiency^{24,31}, we wanted to analyse whether the observed differences in worm longevity and gut colonization produced by *B. subtilis* were due to the different abilities of the bacterial strains to establish a biofilm in the worm intestinal environment. The *tapA-sipW-tasA* and *epsA-G* operons encode for two key components of the extracellular matrix of the biofilm, the TasA protein and the EPS exopolysaccharide, respectively^{25,26,53}. In addition, the *bslA* gene encodes for an essential hydrophobin responsible for the formation of the hydrophobic surface layer that surrounds and protects the biofilm⁵⁴. Therefore, to test our hypothesis, we introduced

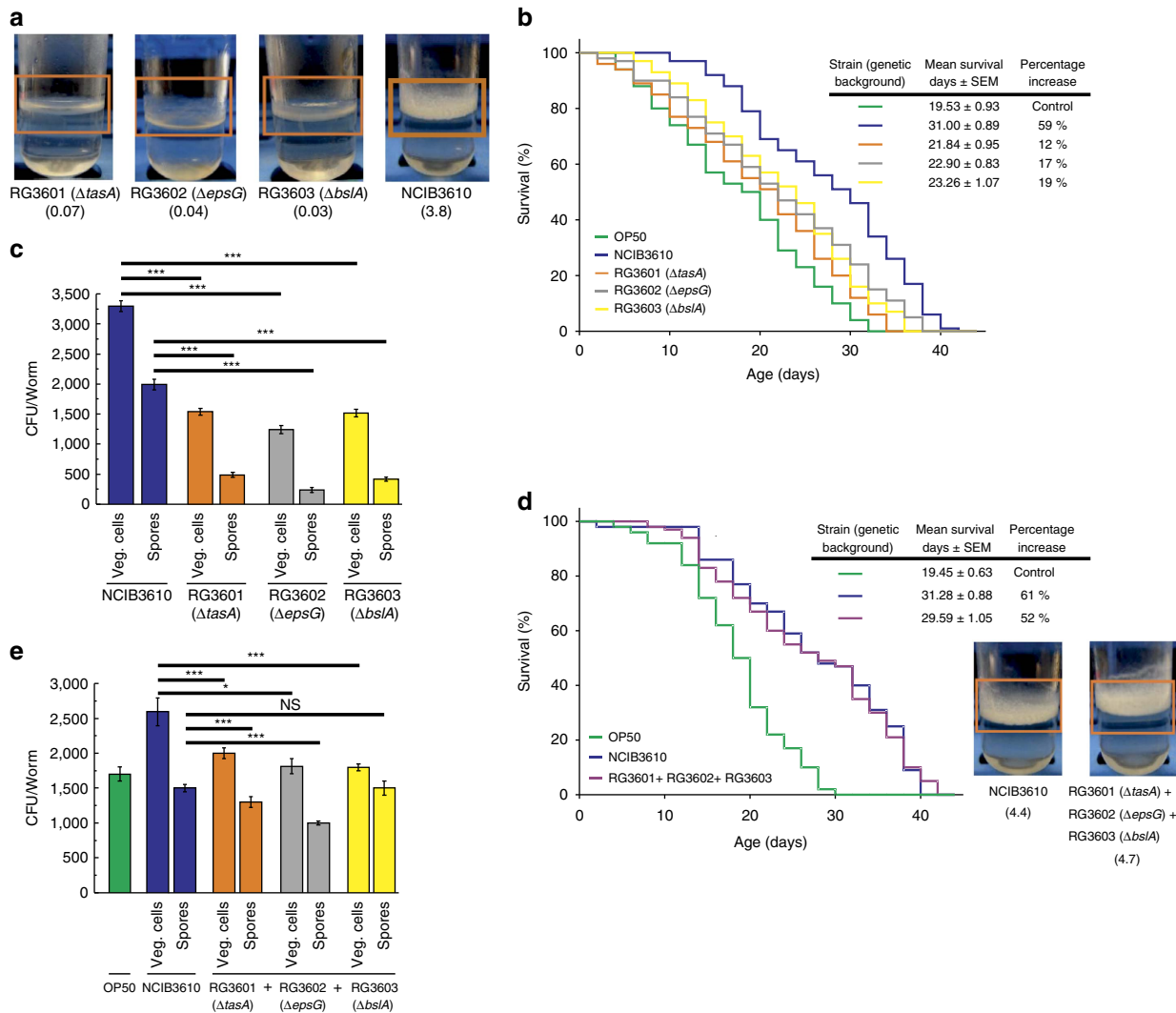


Figure 3 | *B. subtilis* deficient in biofilm formation cannot extend the longevity of *C. elegans*. (a) Biofilm formation proficiency. Biofilms of undomesticated *B. subtilis* strains harbouring mutations in genes encoding for essential components of the biofilm matrix (Δ epsG; Δ tasA or Δ bslA) were developed in liquid NGM. (b) Worm longevity is affected when the synthesis of components of the biofilm matrix is reduced. Fifty L4 worms were fed on spores of undomesticated *B. subtilis* deficient in components of the biofilm matrix (Δ epsG, grey), (Δ tasA, orange) or (Δ bslA, yellow) on NGM agar plates, and the survival was monitored. The figure shows the survival average \pm s.e.m. ($n=3$). (c) Colonization of the worm gut by *B. subtilis* strains deficient in biofilm formation. Thirty L4 worms were allowed to develop on NGM agar plates seeded with OP50 cells, washed and transferred to fresh NGM plates containing spores of the wild-type NCIB3610 (blue) or spores of each one of the three mutants deficient in biofilm formation. Worms were processed to measure the number of *B. subtilis* cells (spores and vegetative forms) in the worm gut. Error bars show the mean \pm s.e.m. ($n=3$) *** $P<0.001$ (analysis of variance (ANOVA) with Bonferroni test). (d) Transcomplementation of a mixture of biofilm-deficient *B. subtilis* strains to restore *C. elegans* lifespan. Thirty L4 worms were fed either on NCIB3610 (blue) or a mixture of the three *B. subtilis* mutants deficient in biofilm formation (purple) and worm survival was monitored. A representative experiment \pm s.e.m. is shown. (e) Recolonization of the worm gut by a proportional mixture of *B. subtilis* strains deficient in biofilm formation. Thirty L4 worms were allowed to develop on NGM agar plates seeded with OP50 cells, washed and transferred to fresh NGM plates containing spores of the wild-type NCIB3610 (blue) or a mixture of the three mutants deficient in biofilm formation. The worms were processed to measure the number of *B. subtilis* cells in the gut worm. Error bars show the mean \pm s.e.m. ($n=3$) *** $P<0.001$ (ANOVA with Bonferroni test). NS denotes no significance differences between the numbers of *B. subtilis* spores counted.

mutations in *bslA*, *epsG* and *tasA* genes of the undomesticated strain NCIB3610 to obtain biofilm-defective derivatives (Supplementary Table 1).

When each of the three undomesticated-derived *B. subtilis* mutant strains defective in biofilm formation (Δ tasA, Δ epsG and Δ bslA; Fig. 3a) were separately used to feed *C. elegans*, there was a significant decrease in lifespan (an average decrease of 30%) compared with *C. elegans* fed on the biofilm-proficient wild-type strain NCIB3610 (Fig. 3b and Supplementary Table 5). For instance, while *C. elegans* fed on the wild-type

NCIB3610 strain showed an increase in longevity of 58.73% (Supplementary Table 5), worms fed on the biofilm-deficient Δ bslA strain (RG3603, Supplementary Table 1) only increased longevity by an average of 19.10% (average value, 23.26 days; 95% CI: 21.16–25.36; equality, $P=0.01$ by log-rank test) compared with the lifespan effect produced by OP50 *E. coli* cells (average value, 19.53 days; 95% CI: 17.70–21.36; equality; Supplementary Table 5).

The observed decrease in the worm lifespan was not associated with a diminished ability of the biofilm-mutant strain

(Δ tasA, Δ bslA or Δ epsG) spores to germinate and/or to be more or less nutritious for *C. elegans* than the wild-type NCIB3610 cells because we did not observe any differences in the efficiency of spore germination or postembryonic worm development or worm chemotactic behaviour using any of the biofilm mutant strains (Δ tasA, Δ bslA or Δ epsG) compared with NCIB3610 spores as a food source. In addition, the spore robustness against chemical and mechanical injuries was indistinguishable between biofilm-proficient and biofilm-deficient strain spores (data not shown). Importantly, the decrease in worm longevity produced by feeding worms each biofilm-defective strain correlated with a decreased bacterial proficiency in gut colonization (Fig. 3c).

Because EPS and the TasA and BslA proteins are secreted to the extracellular matrix of the biofilm²³, mixtures of the Δ bslA, Δ eps and Δ tasA mutant cells complement each other to restore full biofilm formation proficiency²³. Therefore, we fed *C. elegans* on a mix of spores of the three biofilm-deficient mutant strains and measured the lifespan effect produced by this mixture. As shown in Fig. 3d, *C. elegans* fed on a mixture of the three biofilm-deficient mutant strains restored its lifespan to levels comparable with the lifespan obtained when the worm was fed on wild-type NCIB3610 cells. In this case, the worm lifespan fed on a mixture of the three biofilm mutant strains (Δ bslA + Δ eps + Δ tasA) increased by an average of 52.13% (average value, 29.59 days; 95% CI: 27.52–31.65; equality, $P=0.003$ by log-rank test) compared with the strains OP50 (average value, 19.45 days; 95% CI: 17.62–21.28) and NCIB3610 (average value, 31.28 days; 95% CI: 27.52–31.65; equality, $P=0.002$ by log-rank test) used as a food source (Supplementary Table 5). This lifespan effect correlates with the ability of the mixture of the three biofilm-defective strains (Δ bslA + Δ eps + Δ tasA) to recover full biofilm formation proficiency (see insert in Fig. 3d) and worm gut colonization (Fig. 3e). Neither JH642 cells that are poor biofilm makers^{24,31,32} (Supplementary Fig. 1) nor the biofilm-defective NCIB3610 derivatives (Δ tasA, Δ bslA or Δ epsG) affected the growth and postembryonic development of *C. elegans* (worms fed on each biofilm mutant strain required an average of 42.5 ± 2.0 h to reach the late L4/young adult stage). We observed no variation in food preference and/or food availability between the isogenic derivatives of NCIB3610 cells as the reasons for the observed differences in the prolongevity effect of *B. subtilis* on *C. elegans*. Thus, the overall results indicated that biofilm formation proficiency constitutes a key positive property to fully understand the beneficial effect of *B. subtilis* on *C. elegans* lifespan (Table 1B).

The biofilm and nitric oxide produce synergistic anti-aging effects. The beneficial effect of domesticated *B. subtilis* over OP50 on *C. elegans* longevity has been recently attributed to the bacterium's nitric oxide (NO) production proficiency²⁸. NO-mediated signalling plays key roles in all living organisms, and for an unknown reason, *C. elegans* is unable to produce its own NO but is able to incorporate the NO produced by *B. subtilis*^{14,15,28,29}. Most organisms produce NO through aerobic conversion of

L-arginine to L-citrulline in a reaction catalysed by the enzyme NO synthetase encoded by the *nos* gene⁵⁵. *E. coli* strains, several of which are routinely used to feed the worms (that is, OP50, HB101; refs 14,15,29), are not proficient in aerobic NO production because they lack a functional copy of *nos*⁵⁵. However, *E. coli* can produce NO under anaerobic/microaerophilic conditions by a series of biochemical reactions associated with the anaerobic respiratory chain of the bacterium (Supplementary Table 6 and ref. 56). Under this scenario, *E. coli* might find permissive conditions for NO production in the oxygen-depleted

environment of the worm intestine; therefore, the positive effect of *B. subtilis* on worm longevity²⁸ could be due to at least one as-yet unknown additional factor apart from the intestinal NO provision. First, we were interested in determining whether the biofilm proficiency-dependent lifespan effect of *B. subtilis* on *C. elegans* was due to NO production²⁸. As shown in Fig. 4a, the mutations affecting biofilm formation (Δ bslA mutant) or NO synthesis (Δ nos mutant) (Supplementary Table 1) produced a negative effect on *C. elegans* lifespan compared with the lifespan effect produced by the wild-type NCIB3610 strain. Interestingly, the negative effect on worm longevity was more pronounced when *C. elegans* was fed *B. subtilis* cells deficient in biofilm formation (but proficient in NO production; average value, 22.03 days; 95% CI: 20.13–23.94; equality, $P=0.04$ by log-rank test) compared with *B. subtilis* cells deficient in NO production (but proficient in biofilm formation; average value, 25.55 days; 95% CI: 23.31–27.79; equality, $P=2.5 \times 10^{-7}$ by log-rank test; Supplementary Table 7). The average worm lifespan increases of 29.17 and 11.38% were observed when the worms were fed on *B. subtilis* cells defective in NO or biofilm production, respectively, in comparison with the 53.13% lifespan increase (related to OP50 cells) obtained when the worms were fed on wild-type *B. subtilis* (average value, 30.29 days; 95% CI: 28.26–32.33; equality, $P=0.00$ by log-rank; Fig. 4a and Supplementary Table 7). Furthermore, the double mutant of *B. subtilis* deficient in biofilm formation and NO synthesis (Δ nos- Δ bslA; Supplementary Table 1) produced the most negative impact on worm survival (average value, 20.06 days; 95% CI: 18.52–21.60; equality, $P=0.67$ by log-rank test) with a final increase in worm survival of only 1.42% compared with OP50 cells (Fig. 4a and Supplementary Table 7). In addition, spore robustness and worm chemotactic behaviour toward Δ nos ($60.0 \pm 2.0\%$ of Δ nos spore survival after 30 s of treatment at pH = 2.0 and chemotaxis index of 0.95 ± 0.2 , respectively) and Δ nos- Δ bslA ($59.4 \pm 1.9\%$ of Δ nos- Δ bslA spore survival after 30 s of treatment at pH = 2.0 and chemotaxis index of 0.91 ± 0.3 , respectively) cells were not significantly different compared with the NCIB3610 strain. The different effects on *C. elegans* lifespan correlated with the capacity of each *B. subtilis* strain to form a biofilm (Fig. 4b), produce NO (Fig. 4c) and colonize the worm intestine (Fig. 4d). Thus, the positive lifespan effects of NO production and biofilm formation proficiency are different and synergistic.

If NO production and biofilm formation are distinct but complementary processes improving the longevity of *C. elegans*, then we hypothesize that a mixture of mutant *B. subtilis* cells, that is, cells deficient in biofilm formation (Δ bslA) and cells deficient in NO synthesis (Δ nos), would complement each other and restore the full lifespan effect of wild-type NCIB3610 cells on *C. elegans*. As predicted by this hypothesis, a mixture of Δ bslA and Δ nos cells (strains RG3610 plus RG3603, light blue curve in Fig. 4a) restored the worm lifespan to levels comparable to the effect of wild-type NCIB3610 cells (average value, 29.51 days; 95% CI: 27.77–31.75; equality, $P=0.0141$ by log-rank test) compared with OP50 cells (final increase in worm survival, 49.19%; Fig. 4a and Supplementary Table 7).

Overall, these results demonstrate that biofilm formation proficiency constitutes a new attribute, different from NO production, for the anti-aging effect of *B. subtilis* on *C. elegans* (Table 1B). The discovery that NO production is not the only factor that explains how *B. subtilis* extends the longevity of *C. elegans* opens the possibility of the existence of other factors that positively contributes to increase worm longevity.

***B. subtilis* quorum sensing extends worm longevity.** Intra- and interspecific quorum sensing (QS) constitutes a widely used

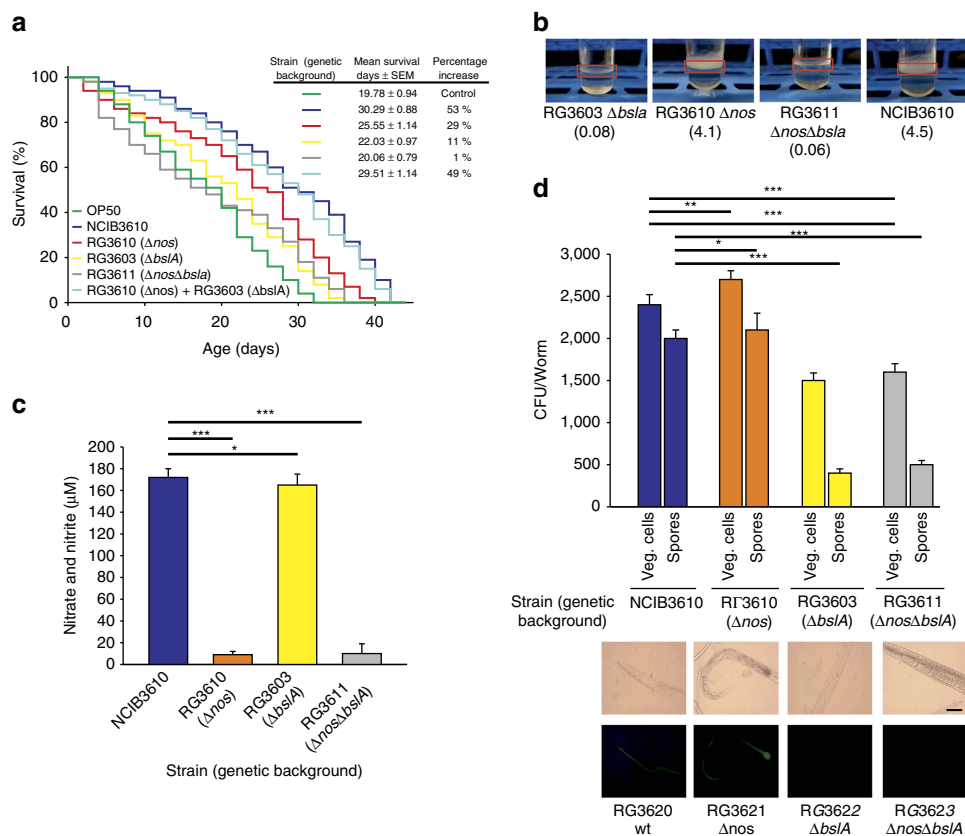


Figure 4 | Biofilm formation and nitric oxide production are required to extend *C. elegans* lifespan. (a) Effects upon longevity of worms fed on undomesticated *B. subtilis* defective in biofilm production and/or NO synthesis. Fifty L4 worms were fed either on spores of undomesticated NCIB3610 (blue) or RG3610 (Δnos , defective in NO production, orange) or RG3603 ($\Delta bslA$, defective in biofilm synthesis, yellow) or RG3611 ($\Delta nos\Delta bslA$, defective both in NO production and biofilm synthesis, grey) or a mixture of RG3610 and RG3603, light blue) *B. subtilis* on NGM agar plates, and survival was monitored. A representative experiment \pm s.e.m. is shown. (b) Biofilm formation proficiencies of undomesticated *B. subtilis* strains harbouring mutations in genes essential for biofilm formation and/or NO production. Biofilms were developed in liquid NGM. (c) NO quantification of undomesticated *B. subtilis* strains harbouring mutations in genes essential for biofilm formation and/or NO production. The nitrite and nitrate concentrations are expressed as μM . Error bars show the mean \pm s.e.m. ($n = 3$). *** $P < 0.001$ and * $P < 0.05$ (analysis of variance (ANOVA) with Bonferroni test). (d) Colonization of the worm gut by *B. subtilis* strains deficient in biofilm formation and/or NO production. L4 worms were allowed to develop on NGM agar plates seeded with OP50 cells, washed and transferred to fresh NGM plates containing spores of the wild-type NCIB3610 (blue) or RG3610 (Δnos , defective in NO production, orange) or RG3603 ($\Delta bslA$, defective in biofilm synthesis, yellow) or RG3611 ($\Delta nos\Delta bslA$, defective both in NO production and biofilm synthesis, grey) *B. subtilis* strains, respectively. The worms were taken and processed to measure the number of *B. subtilis* cells in the worm gut, expressed as CFUs per worm. Error bars show the mean \pm s.e.m. ($n = 3$). *** $P < 0.001$, ** $P < 0.01$ and * $P < 0.05$ (ANOVA with Bonferroni test). Images shown on the bottom are epifluorescence micrographs of typically stained N2 *C. elegans* fed *epsA::gfp*-expressing *B. subtilis* strains (RG3620, wild-type; RG3621, Δnos ; RG3622, $\Delta bslA$; and RG3623, $\Delta nos\Delta bslA$). The fluorescence images were superimposed to differential interference contrast (DIC) images to depict the localization of the labels within the cells. Scale bar, 20 μm .

strategy that bacteria use in nature to communicate with each other and with cells of different kingdoms^{18,19,57,58}. Recent studies have shown the potential effect of bacterial QS on *C. elegans* physiology. *C. elegans* recognized *Vibrio cholerae* QS signalling molecules through the AWC^{on} neuron⁵⁹. Furthermore, infection of *C. elegans* with *Candida albicans* or *Pseudomonas aeruginosa* was repressed by bacterial QS molecules^{48,60}, increasing the idea that the nematode can detect microbial signals and thus modulate each other (bacteria and host) in a symbiotic relationship⁶¹. *B. subtilis* QS pentapeptide CSF (Competence Sporulation stimulating Factor, also named PhrC)⁶² was previously reported to contribute to intestinal homeostasis by activating key survival pathways of the host (p38 MAP kinase and protein kinase B) and by inducing cytoprotective heat shock proteins (Hsps)^{21,63}. These effects of CSF²¹ depend on its uptake by the protein OCTN2, a host cell membrane transporter of organic cations present in the apical face of

epithelial cells⁶³. Because an orthologue of *octn2* is present in *C. elegans*⁶⁴, we were interested in determining whether the CSF molecule affects the lifespan of *C. elegans*. As shown in Fig. 5, *C. elegans* fed on NCIB3610-isogenic *B. subtilis* strain deficient in CSF synthesis (Δcsf mutant, strain RG4010; Supplementary Table 1) showed a decreased lifespan compared with worms fed on wild-type NCIB3610 cells. In this case, worms fed on Δcsf cells showed an increase in survival of 29.89% (average value, 26.16 days; 95% CI: 24.41–27.91 days; equality, $P = 0.04$ by log-rank test), compared with OP50 cells (average value, 20.14 days; 95% CI: 18.53–21.75; Fig. 5a and Supplementary Table 8).

When the longevity of worms fed on the single, double and triple isogenic mutant strains RG4010 (Δcsf), LC3601 ($\Delta nos\Delta csf$) and LC3611 ($\Delta nos\Delta csf\Delta bslA$) (Supplementary Table 1) was compared, a synergic decrease in the worm lifespan was observed (Fig. 5a). The average survival of worms fed RG4010 (Δcsf), LC3601 ($\Delta csf\Delta nos$) or LC3611 ($\Delta csf\Delta nos\Delta bslA$) cells was

26.16 days (95% CI: 24.41–27.91 days; equality, $P=0.04$ by log-rank test), 23.85 days (95% CI: 22.05–25.65 days; equality, $P=2.5 \times 10^{-6}$ by log-rank test) and 18.79 days (95% CI: 17.55–20.03 days; equality, $P=0.7695$ by log-rank test), respectively, compared with OP50 cells (Fig. 5a and Supplementary Table 8).

Interestingly, the *B. subtilis* triple mutant strain (deficient in biofilm formation and NO and CSF production, strain LC3611) produced a lifespan effect on *C. elegans* survival that was smaller than the effect obtained with OP50 cells used as a control (6.7% lifespan decrease, Fig. 5a). In addition, the lifespan effects of the single (Δcfs), double ($\Delta cfs\Delta nos$, $\Delta bslA\Delta nos$) and triple ($\Delta bslA\Delta nos\Delta cfs$) mutant strains (Fig. 5a and Supplementary Fig. 5) correlated well with the proficiency or deficiency in biofilm formation and worm gut colonization of each strain, and there was no significant difference in spore robustness or worm chemotactic behaviour toward these mutant cells compared with the NCIB3610 strain (Supplementary Fig. 1).

The use of a mixture of $\Delta bslA\Delta nos$ cells (deficient in biofilm formation and NO synthesis) and Δcfs cells (deficient in CSF synthesis) to feed the worm (average worm survival obtained with each strain individually used as food: 20.06 days and 26.16 days, respectively; Supplementary Tables 7,8) complemented the deficiency of each mutant strain and re-established the lifespan of *C. elegans* to levels comparable to the lifespan effect produced by wild-type *B. subtilis* cells. Average worm survival values of 30.74 days (95% CI: 28.9–32.58 days; equality, $P=0.003$ by log-rank test) and 29.68 days (95% CI: 27.59–31.77 days; equality, $P=0.004$ by log-rank test) were obtained with wild-type cells and mixture of $\Delta bslA\Delta nos$ plus Δcfs cells, respectively (Fig. 5a and Supplementary Table 8). Accordingly, the use of FUDR did not interfere with the effects produced by the $\Delta bslA$, Δnos and Δcfs *B. subtilis* mutant strains on *C. elegans* survival (Supplementary Table 9).

To confirm that CSF production constitutes a novel longevity factor for *C. elegans*, we supplemented the worm diet with pure CSF (100 nM) in Petri dishes containing OP50 (Fig. 5b) or LC3611 ($\Delta bslA\Delta nos\Delta cfs$; Fig. 5c) bacterial cells as a worm food source. Interestingly, the added CSF increased the lifespan of *C. elegans* fed on OP50 cells, with average survival values of 18.68 days (95% CI: 17.44–19.92 days) and 23.98 days (95% CI: 22.14–25.85 days; equality, $P=0.0001$ by log-rank test) in the absence or presence of CSF supplementation, respectively (Fig. 5b and Supplementary Table 8). Similarly, the addition of CSF to *C. elegans* fed on the *B. subtilis* mutant strain LC3611 ($\Delta bslA\Delta nos\Delta cfs$) increased the worm lifespan to levels even higher than those obtained when $\Delta bslA\Delta nos$ cells (strain RG3611, proficient in CSF production) were used as a food source (Fig. 5c). Average worm survival values of 16.06 days (95% CI: 13.93–18.19 days), 17.52 days (95% CI: 15.55–19.49 days; equality, $P=0.15$ by log-rank test) and 20.02 days (95% CI: 18.48–21.56 days; equality, $P=0.55$ by log-rank test) were obtained with the $\Delta bslA\Delta nos\Delta cfs$, $\Delta bslA\Delta nos$ and $\Delta bslA\Delta nos\Delta cfs$ (plus CSF) cells, respectively (Fig. 5c and Supplementary Table 8). In sum, these results confirm the QS molecule CSF as the third factor that contributes to the lifespan extension effect of *B. subtilis* on *C. elegans* (Table 1B). In addition, these results strongly suggested that the positive lifespan effect of *B. subtilis* on *C. elegans* is primarily, or exclusively, dependent on the three properties studied here (that is, NO, CSF and biofilm production), which produced positive synergic effects on worm survival.

Using Cox proportional hazard model (Supplementary Table 10), we confirmed that the biofilm formation proficiency (absence or presence of *bslA* activity) constitutes the more important *B. subtilis* property responsible for extending worm longevity. Worms fed on biofilm-deficient *B. subtilis* have a risk

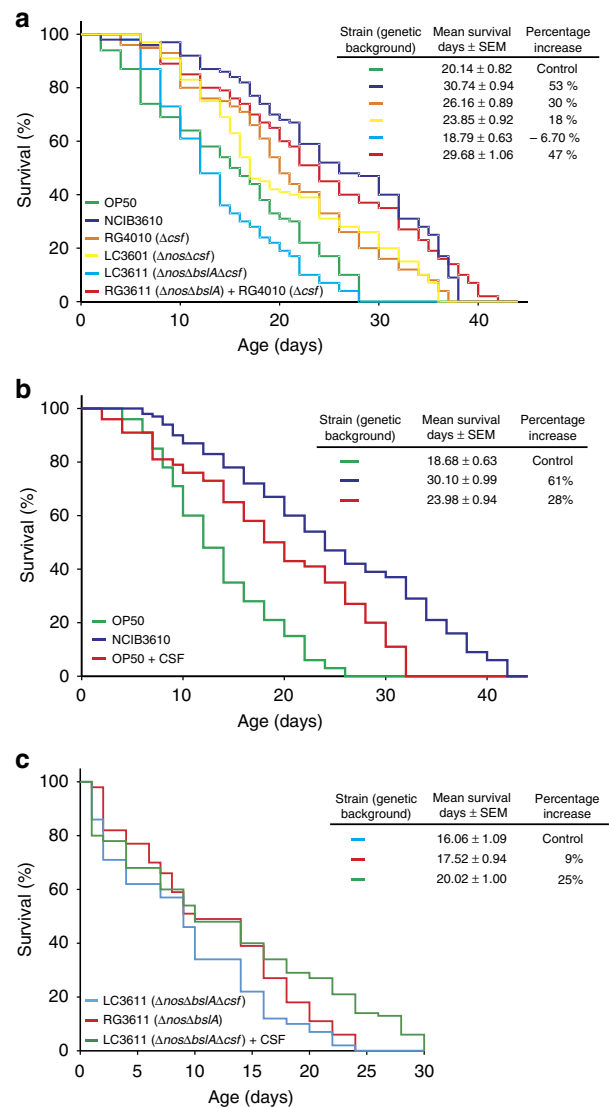
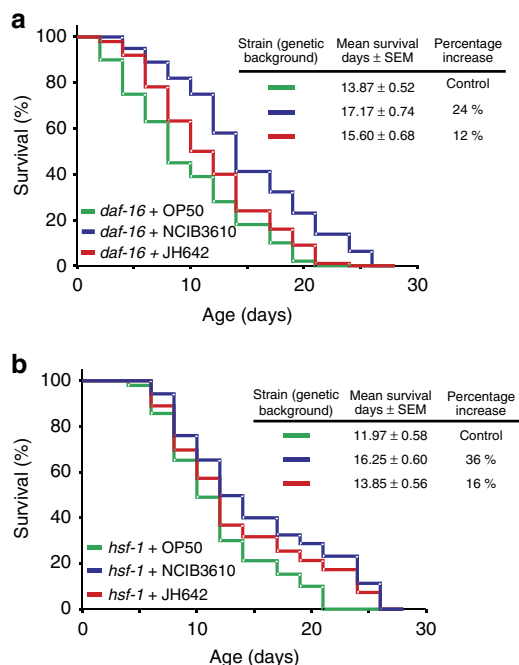


Figure 5 | The quorum-sensing factor of *B. subtilis* (CSF) extends *C. elegans* longevity. (a) Synergic effects of biofilm formation proficiency ($\Delta bslA$), NO production (Δnos) and CSF synthesis (Δcfs) on *C. elegans* longevity. Late L4/young-adult-stage N2 worms were fed either on spores of undomesticated NCIB3610 (blue) or RG4010 (Δcfs , defective in CSF production, orange) or LC3601 ($\Delta nos\Delta cfs$, defective in NO and CSF production, biofilm synthesis and CSF production, light blue) or a mixture of RG3611 and RG4010 (red) *B. subtilis* on NGM agar plates, and survival was monitored for signs of life. The data shown are the average \pm s.e.m. ($n=3$). (b) Exogenous CSF peptide increased the longevity of worms fed OP50 *E. coli*. Late L4/young-adult-stage N2 worms were fed either on OP50 *E. coli* (green) or OP50 *E. coli* plus 100 nM CSF peptide (red) on NGM agar plates, and the survival was monitored for signs of life. The data shown are the average \pm s.e.m. ($n=3$), and the survival increase is expressed as a percentage of the total number of worms fed OP50 *E. coli*. (c) Exogenous CSF peptide restored the longevity of worms fed *B. subtilis* deficient in QS. Late L4/young-adult-stage N2 worms were fed either on spores RG3611 ($\Delta nos\Delta bslA$, defective both in NO production and biofilm synthesis, red) or LC3611 ($\Delta nos\Delta bslA\Delta cfs$, defective in NO production, biofilm synthesis and CSF production, light blue) or LC3611 plus 100 nM CSF peptide (green) *B. subtilis* on NGM agar plates, and survival was monitored for signs of life. A representative experiment \pm s.e.m., and the survival increase as a percentage of the total number of worms fed on LC3611 cells is shown.

Table 2 | The *B. subtilis* biofilm enhances the production of the anti-aging molecules NO and CSF.

Media	Growth condition	NO production ($\text{NO}_2^- + \text{NO}_3^-$ $\mu\text{mol per } 1.0 \times 10^8$ cells)	<i>csf-lacZ</i> activity (Miller Units per 1.0×10^8 cells)
MSgg	Planktonic	55.60 \pm 0.82	160.45 \pm 8.3
MSgg	Biofilm	257.60 \pm 25.20	540.50 \pm 21.1
NGM	Planktonic	180.00 \pm 19.10	225.83 \pm 15.2
NGM	Biofilm	1,160.00 \pm 45.20	1,740.15 \pm 75.1

Biofilms of the wild-type undomesticated strain NCIB3610 were developed in MSgg and NGM as indicated in the 'Methods' section. After incubation for 48 h at 25 °C, the developed biofilms were disrupted as described previously^{23,24} and assayed for their NO-derivate species (nitrites and nitrates) content²⁸ and CSF production levels, which are measured as levels of β -galactosidase activity driven by the promoter of the *csf* gene⁶². The average values of at least three independent experiments \pm s.e.m. are presented.

**Figure 6 | The longevity effects of *B. subtilis* require the activity of the anti-aging factors DAF-16 and HSF-1.**

Undomesticated and domesticated *B. subtilis* cells (NCIB3610 and JH642, respectively) partially extend the lifespan of *daf-16* and *hsf-1* worms compared with their lifespan effect produced on N2 worms. Late L4/young-adult-stage *daf-16* (a) or *hsf-1* (b) worms were fed either on spores of undomesticated NCIB3610 (blue) or domesticated JH642 (red) *B. subtilis* on NGM agar plates, and the survival was monitored for signs of life. Each graph is the average \pm s.e.m. ($n=3$), and the survival increase is expressed as a percentage of the total number of worms fed on OP50 *E. coli* (green).

of death 2.45-fold higher than worms fed on biofilm-proficient cells (Supplementary Table 10). Interestingly, this statistical analysis showed that the effects of NO and CSF on lifespan were not additive and independent one from the other but showed the existence of a genetic dependence between *nos* and *csf*. Up to now, we do not know the molecular reason for this bacterial gene interaction in the worm gut environment but it shows up the complexity of the mechanism responsible for the extended host longevity. We are currently investigating this interesting finding.

The *B. subtilis* biofilm enhances the production of NO and CSF.

The cell-to-cell communication and division of labour that occurs inside the biofilm produce significant differences in gene expression compared with the gene expression pattern of cells

grew under planktonic conditions^{16,19,23,58}. In this sense, the levels of NO and CSF produced in *B. subtilis* cultures have been measured only under planktonic growth conditions⁶². To determine whether NO and/or CSF production is affected in *B. subtilis* cells that develop as a biofilm, we grew NCIB3610 cells under planktonic and biofilm supporting conditions and measured the production levels of the two longevity molecules. As shown, the production levels of NO (Table 2) and CSF (Table 2) were significantly enhanced when *B. subtilis* was grown as a biofilm compared with the levels of NO and CSF produced under planktonic conditions. These results (Table 2 and Figs 2 and 3) reinforce the importance of the biofilm formation proficiency in the longevity of *C. elegans*.

The results shown in Table 2 also suggest that *B. subtilis* viability inside the worm gut would be an important prerequisite for the longevity effect. Only alive (and not dead) vegetative *B. subtilis* cells, originated from worm gut germinated spores, are able to form a biofilm and enhance production of the anti-aging molecules NO and CSF. If this interpretation is correct, there should be a difference in the magnitude of the longevity effect between worms fed on alive or dead *B. subtilis* cells. To test this hypothesis, we fed *C. elegans* on dead and alive *B. subtilis* spores to measure the magnitude of the produced lifespan. Interestingly, *B. subtilis* must be alive in order to produce its beneficial longevity effect (Supplementary Fig. 6 and Supplementary Table 11). Dead *B. subtilis* used to feed *C. elegans* produced a lower ($-14.32.0\%$) lifespan effect (average survival, 25.79 days; 95% CI: 24.22–27.36 days; equality, $P=0.000002$ by log-rank test) than alive *B. subtilis* (average survival, 30.10 days; 95% CI: 25.35–29.29 days) (Supplementary Fig. 6 and Supplementary Table 11).

Accordingly, dead pathogenic bacteria (that is, killed *P. aeruginosa*) used to feed *C. elegans* increase worm survival in comparison with live pathogenic bacteria used as a food source. In addition, *E. coli* strains, including the 'non-virulent' OP50 strain, are mildly pathogenic to aging *C. elegans*^{14,15,29}. We found that dead OP50 cells effectively prolonged *C. elegans* survival (21% lifespan increase), with average survival of 24.73 days (95% CI: 23.23–26.23 days; equality, $P=2.4 \times 10^{-7}$ by log-rank test) in comparison with live OP50 cells (average survival, 20.51 days; 95% CI: 19.35–21.67 days) used as food sources. Overall, these results confirmed that *B. subtilis* constitutes a beneficial flora for *C. elegans* and showed that the longevity effect of this bacterium depends on its viability inside the worm gut.

B. subtilis downregulates the insulin-like signalling pathway.

The lifespan of *C. elegans* is subject to regulation by conserved signalling pathways and transcription factors that sense stress, environmental cues and nutrient availability²⁹. Dietary restriction (DR) and the insulin-like signalling (ILS) pathway are central for the regulation of longevity in different animal models, including *C. elegans*^{1,2,65–68}. These longevity regulatory pathways

(DR and ILS) converge on the positive and negative regulation of the transcription factors DAF-16 and HSF-1, respectively^{68–70}.

To determine how *B. subtilis* affects the signalling pathways involved in the regulation of *C. elegans* longevity, we fed *daf-16* (*mu86*) and *hsf-1* (*sy441*) mutant worms (strains CF1038 and PS3551, respectively, Supplementary Table 1) with wild-type *B. subtilis* and isogenic mutants showing a decreased effect on wild-type N2 worm lifespan (Δ *bslA*, Δ *nos* and Δ *csf* cells). Interestingly, the lifespan extension effect of wild-type *B. subtilis* on *daf-16* and *hsf-1* worms was approximately half of the lifespan extension effect on wild-type N2 worms (Fig. 6a,b and Supplementary Table 12). While the average lifespan extension effect of NCIB3610 and JH642 cells (compared with OP50 cells) on wild-type (N2) worms was 55.54 and 27.13%, respectively (Table 1A), in *daf-16* worms, these percentages were 23.79 and 12.47%, respectively (Fig. 6a and Supplementary Table 12). Similarly, the lifespan extension effect on *hsf-1* worms fed on NCIB3610 or JH642 cells (Fig. 6b) was partial in comparison with the lifespan extension effect on wild-type worms fed the same type of *B. subtilis* cells. In this case, the average lifespan extension effect produced by NCIB3610 and JH642 cells (compared with OP50 cells) on *hsf-1* worms was 35.76% and 15.71%, respectively (Fig. 6b and Supplementary Table 12). Because HSF-1 and DAF-16 are active in *daf-16* and *hsf-1* worms, respectively⁶⁹, our results suggest that the prolongevity effect of *B. subtilis* on *C. elegans* depends on the activity of DAF-16 and HSF-1 (Table 1C,D).

How does each *B. subtilis* prolongevity property depend on DAF-16 and/or HSF-1 activities? To answer this key question, we measured the survival of N2, *daf-16* and *hsf-1* worms fed on NCIB3610-isogenic mutants defective in biofilm (Δ *bslA*), NO (Δ *nos*) and CSF (Δ *csf*) production (Fig. 7). The abolishment of each of the *B. subtilis* prolongevity properties was responsible for partial lifespan decreases of 26.35, 12.52 and 10.96% for wild-type N2 worms fed on Δ *bslA*-, Δ *nos*- and Δ *csf*- *B. subtilis* cells, respectively, compared with the use of wild-type NCIB3610 cells (Fig. 7a and Supplementary Table 13). Accordingly, the survival of *daf-16* and *hsf-1* worms fed on biofilm-deficient (Δ *bslA*) *B. subtilis* cells showed a lifespan decrease of 15.04% (average value, 14.91 days; 95% CI: 14.04–15.78 days) and 15.16% (average value, 14.72 days; 95% CI: 13.65–15.79 days), respectively, compared with the average lifespan obtained with wild-type NCIB3610 cells used to feed *daf-16* (average value, 17.55 days; 95% CI: 16.48–18.62 days) and *hsf-1* worms (average value, 17.35 days; 95% CI: 16.18–18.52 days) (Fig. 7b,c and Supplementary Table 13). Similarly, the average worm survival percentage decreased by 9.69% (average value, 15.85 days; 95% CI: 14.67–17.03 days) and 6.57% (average value, 16.21 days; 95% CI: 14.98–17.44 days) in *daf-16* and *hsf-1* worms, respectively, when fed on *B. subtilis* cells defective in NO synthesis (Δ *nos*) in comparison with feeding *daf-16* and *hsf-1* worms wild-type NCIB3610 cells (Fig. 7b,c and Supplementary Table 13). Finally, survival decreased by 6.72% (average value, 16.37 days; 95% CI: 15.20–17.54 days) and 4.61% (average value, 16.55 days; 95% CI: 15.35–17.75 days) in *daf-16* and *hsf-1*- worms, respectively, when fed on Δ *csf* *B. subtilis* cells compared with feeding wild-type NCIB3610 cells to *daf-16* and *hsf-1* worms (Fig. 7b,c and Supplementary Table 13). In addition, we confirmed that the lifespan effects produced by *B. subtilis* NCIB3610 and its isogenic derivatives (Δ *nos*, Δ *bslA* and Δ *csf*) on wild-type *daf-16* and *hsf-1* worms were not affected by the inclusion of FUdR in the assays (Supplementary Table 9). In sum, these results indicated that each of the three anti-aging properties of *B. subtilis* require the activity of HSF-1 and DAF-16 (ref. 69; Fig. 7 and Supplementary Tables 12,13) and reinforced the former conclusion suggesting that the biofilm formation

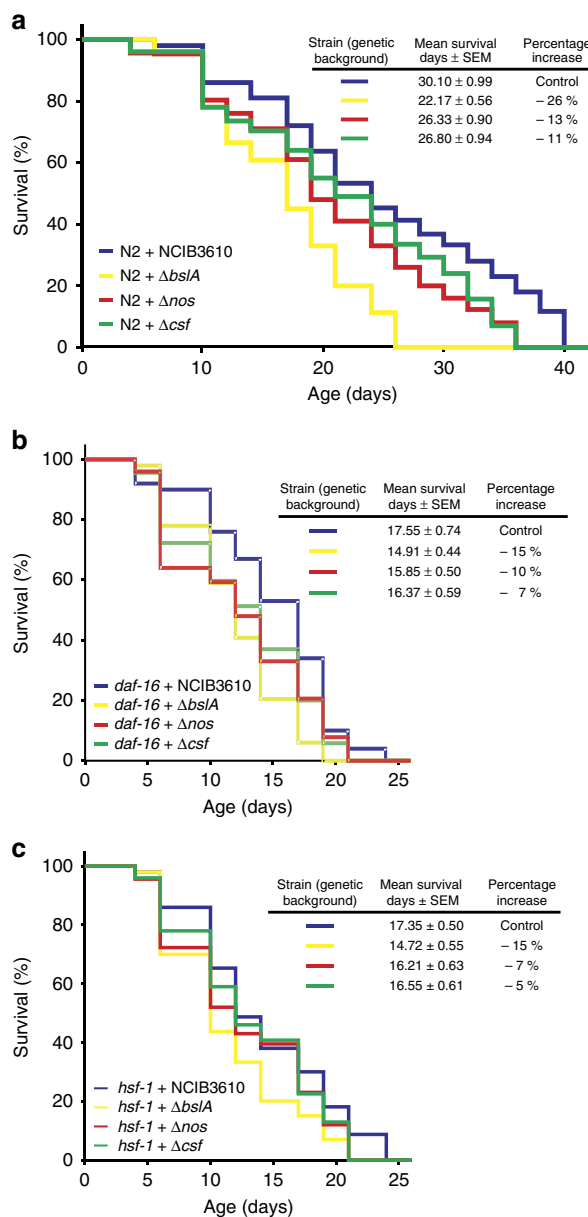


Figure 7 | Dissecting the contribution of each *B. subtilis* anti-aging property on worm survival pathways. Late L4/young-adult-stage N2 (a), *daf-16* (b) or *hsf-1* (c) worms were fed either on spores of RG3610 (Δ *nos*, defective in NO production, red) or RG3603 (Δ *bslA*, defective in biofilm synthesis, yellow) or RG4010 (Δ *csf*, defective in CSF production, green) *B. subtilis* on NGM agar plates, and the survival was monitored for signs of life. Undomesticated NCIB3610 *B. subtilis* (blue) was used as a control. A representative experiment \pm s.e.m. ($n = 3$) is shown, and the survival increase is expressed as a percentage of the total number of worms fed on NCIB3610 cells (blue).

proficiency of *B. subtilis* is the most important property causing the beneficial effect on *C. elegans* longevity.

As mentioned, host longevity is mainly regulated by the signalling pathways of DR and the nutrient-sensing pathway ILS that converge in the regulation of DAF-16 and HSF-1 activities^{68–70}. Interestingly, ILS could mediate part of the DR prolongevity effect because DR downregulates the activity of ILS^{1,2}. Therefore, we tested the putative participation of the ILS pathway in the prolongevity effect of *B. subtilis* on *C. elegans*. DAF-2 is the *C. elegans* homologue of the insulin-like receptor

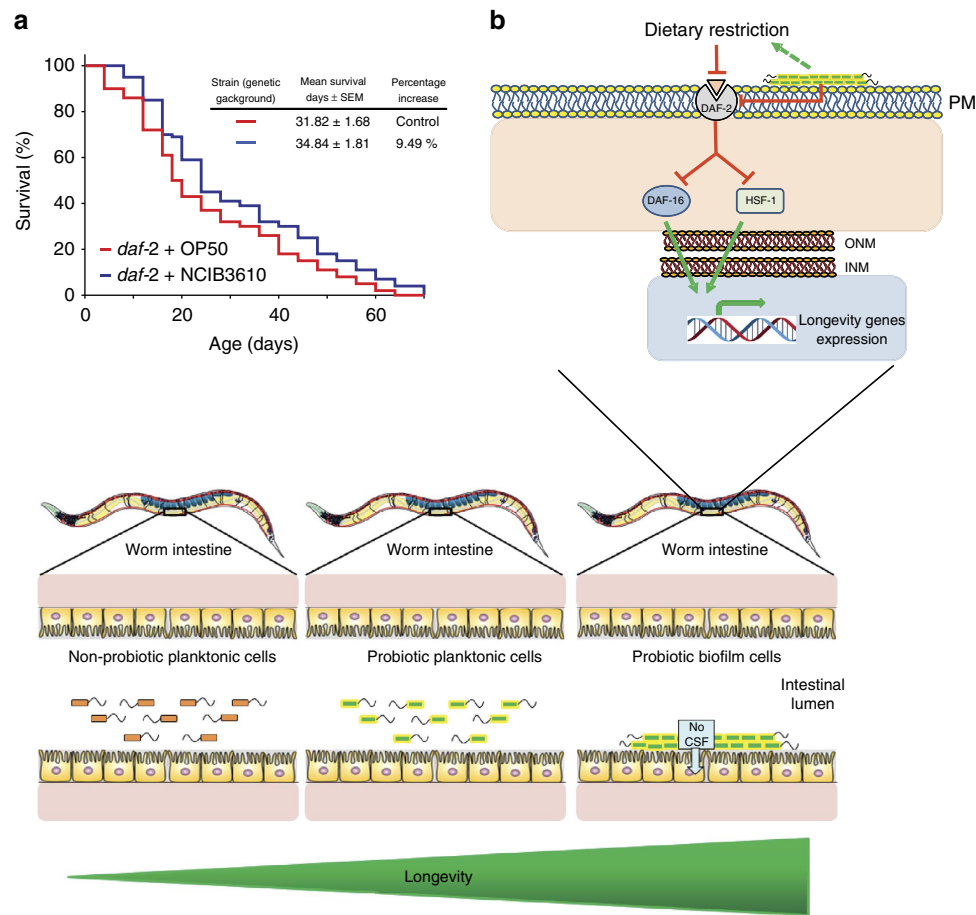


Figure 8 | The prolongevity effect of *B. subtilis* is primarily transduced through the ILS pathway. (a) L4 *daf-2* worms were fed either NCIB3610 *B. subtilis* (blue) or OP50 *E. coli* (red) on NGM agar plates, and the survival was monitored for signs of life. A representative experiment \pm s.e.m. and the survival increase as a percentage of the total number of worms fed on OP50 *E. coli* cells is shown. (b) A workable model of how *B. subtilis* improves host health and longevity. Bottom illustration. Once *B. subtilis* forms a biofilm in the intestine of *C. elegans* (right cartoon), a continued and probably coordinated provision of beneficial and anti-aging NO and CSF molecules to the host tissues is produced. In addition, if NO and CSF are synthesized in the intestinal lumen, because the biofilm is not formed (left and middle cartoons), they would rapidly disappear because of their dilution before reaching the host tissues, the presence of degrading enzymes (that is, intestinal peptidases for CSF) or the intrinsic short-life of the molecule (that is, NO). Top illustration. The lifespan of the worm is regulated by a biochemical pathway that influences the activity of the gene-transcription factors DAF-16 and HSF-1. The binding of insulin-like molecules activates DAF-2, which in turn activates a series of protein kinase enzymes (not shown here for simplicity) that phosphorylates DAF-16, keeping it inactive in the cytoplasm (\perp). In addition, active DAF-2 is responsible for the formation of an inhibitory protein complex (not shown here for simplicity) that sequesters HSF-1 in the cytoplasm (\perp). On downregulation of DAF2, DAF-16 and HSF-1 become active after phosphorylation and trimerization, respectively (not showed here). Active DAF-16 and HSF-1 are translocated to the nucleus and activated stress-protective and -prolongevity genes (green arrow). The biofilm established by *B. subtilis* or a signal derived from it, produces a direct (solid line) or indirect (dashed line) downregulation (\perp) of DAF-2 receptor, activating the downstream cascade and extending lifespan (see text for details).

(IGFR), a transmembrane receptor that negatively regulates DAF-16 and HSF-1 (ref. 69). Loss-of-function mutations affecting DAF-2 have been shown to increase longevity and resistance to heat stress⁶⁸. Interestingly, most of the positive lifespan effects of *B. subtilis* on wild-type *C. elegans* disappeared when this bacterium was used to feed *daf-2* (e1370) worms. Average values of 31.82 days (95% CI: 28.84–35.10 days) and 34.84 days (95% CI: 31.26–38.39 days) were obtained when *daf-2* worms were fed on OP50 and NCIB3610 cells, respectively (Fig. 8a and Supplementary Table 14). These lifespan values represent a 9.49% increase in the longevity of NCIB3610-fed *daf-2* worms (Fig. 8a) versus a 55.54% average increase in the longevity of NCIB3610-fed N2-worms compared with OP50 cells used to feed *daf-2* and N2 worms, respectively (Table 1A,E). These results strongly indicated that the anti-aging effect of *B. subtilis* on *C. elegans* is mainly transduced through the ILS pathway.

Aging is a multifactorial and poorly understood process characterized by progressive impairment of the host response to stresses and general cellular deterioration of key metabolic pathways^{1,2}. Intensive work in different animal models (that is, yeasts, worms, flies, mice and monkeys) has identified a number of factors that promote longevity. Restricting food intake (DR), decreasing insulin/IGF-1 signalling (IIL), slowing mitochondrial respiration, reducing germline function or lowering temperature can all extend lifespan^{1,2}. In addition, probiotics are associated with a broad spectrum of positive effects on host health, including positive effects on host longevity^{9–15,21,22}.

To our knowledge, the present study is the first to formulate and address the question of how the bacterial biofilm might affect the prolongevity effect of beneficial gut bacteria on the host. Our evidence directly implicates the biofilm formation proficiency as the primary cause of the increased lifespan and stress

resistance (that is, healthy longevity) of *C. elegans* when fed *B. subtilis* (Figs 1–3 and Table 1).

In the case of the host (*C. elegans*), the benefits of the biofilm are evident: lifespan extension, higher stress resistance and probably competitive exclusion of pathogens^{2,21,22,42}. In addition to our results, it has been reported that *B. subtilis* strains proficient in biosurfactant production (that is, fengycin) are able to protect *C. elegans* from infection by bacterial pathogens⁴². In addition, the ability to establish a biofilm in connection with the host cells would allow for a stronger and closer interaction between the bacterium and the host^{9,44}. The finding that exogenously added CSF (Fig. 5) and NO²⁸ extend the lifespan of *C. elegans* fed *E. coli* cells supports the notion of the underlying phenomenon of worm–bacteria QS. This dual microbial–worm interaction would allow the bacterium to colonize and establish a multicellular biofilm in the friendly environment of the worm gut mucosa, a similar scenario to the formation of stable biofilms during the beneficial bacteria–plant interaction of some Bacilli (that is, *B. subtilis* and *B. amyloliquefaciens*) with PGPR (Plant Growth Promoting Rhizobacteria) activity on plant roots (rhizospheric biofilm)²³. In addition, the bacterial properties and behaviour in a multicellular biofilm differ from the behaviour and properties of bacteria grown as individuals under planktonic conditions^{16–18}. Specifically, our results demonstrated the importance of the biofilm for the success of *B. subtilis* to healthy *C. elegans* gut colonization (Figs 2 and 3), increase the production of the anti-aging molecules NO/CSF (Table 2), and increase worm longevity (Figs 1, 4 and 5). Future studies would address how the production of the anti-aging molecules NO and CSF is enhanced in *B. subtilis* cells grown as a biofilm (Table 2) and whether this higher NO and CSF production might be influenced by signals originating from the host (Supplementary Table 10).

The present work also indicated that the prolongevity effect of *B. subtilis* on *C. elegans* requires the activity of FOXO/DAF-16 and HSF-1 (Figs 6 and 7 and Table 1). At the top of the regulatory pathways that modulate the activity of HSF-1 and DAF-16 in *C. elegans* are the ILS pathway (homologous to the insulin/IGF-1 pathway present in humans) and the process of DR^{1,2,29}. We showed that the prolongevity effect of *B. subtilis* on *C. elegans* primarily depends on the functionality (downregulation) of the ILS pathway (Fig. 8a). This result points to the ILS pathway as the target of the *B. subtilis* biofilm to increase host longevity. Interestingly, it has been observed that healthy human centenarians likely have IGF-1 receptor genetic variants associated with reduced function, an intriguing observation that correlates with our findings. As ILS pathway is part of the nutrient signalling pathway, it is also (negatively) controlled by DR a scenario that opens the possibility that ultimately DR might sense and control the ILS-dependent prolongevity effect of *B. subtilis* (Fig. 8b). Finally, driven by the Microbiome Project^{3,8,10,71}, literature about the microbiota and its effects on human health and longevity has grown exponentially in the last decade. This scenario and the present results open the possibility to test if *B. subtilis* might produce beneficial effects on human longevity^{72–74}.

Methods

Strains and growth media. The *B. subtilis* strains used in this study were the domesticated JH642 (ref. 33), the undomesticated RG4365 (ref. 27) and NCIB3610 (ref. 23), and their isogenic derivatives (Supplementary Table 1). The OP50 *E. coli* strain was obtained from the *Caenorhabditis* Genetic Center (CGC). As indicated, bacteria were grown in Luria-Bertani (LB) broth and Schaeffer's sporulation medium (SM)³⁰. Sporulation was induced by the starvation method: *B. subtilis* strains were grown in SM medium at 37 °C for 48 h (ref. 30). After this incubation period, the culture was heat-treated for 20 min at 80 °C to kill vegetative cells³⁰. To

obtain pure spores, the heat-treated culture was treated three times with lysozyme (25 µg ml⁻¹; Sigma Co.), washed each time with cold water and centrifuged until 100% of the culture consisted of phase-bright spores. When indicated, the pure spore solution was autoclaved twice to kill spores. Wild-type N2 (Bristol) and mutant strains (obtained from CGC) worms were maintained at 20 °C on Nematode Growth Medium agar (NGM)²⁸ plates seeded with OP50 *E. coli* or *B. subtilis* cells with or without supplementation with ampicillin (100 µg ml⁻¹), respectively. If necessary, the antifungal amphotericin (25 µg ml⁻¹; Sigma Co.) was also added to the NGM medium. The QS pentapeptide (ERGMT) was obtained from Thermo Scientific Co. (formerly Invitrogen Co.) and conserved at -20 °C until use.

Lifespan analysis. Lifespans were monitored at 20 °C as described previously²⁸. Briefly, to obtain a synchronized population, embryos were isolated by treating adult worm hermaphrodites with alkaline hypochlorite and allowing them to develop. In all the cases, late L4/young adult stage worms were used at t = 0 for lifespan analysis, and 16 µM 5-fluoro-2'-deoxyuridine (FUDr, Sigma Co.) was used to inhibit progeny growth. During the quantification of the number of dead/live worms, the investigator was blinded to the group allocation. All the experiments were repeated at least three times. Worms were considered dead when they ceased pharyngeal pumping and did not respond to prodding with a platinum wire. Worms with internal hatching were removed from the plates and excluded from lifespan calculations. Given that some temperature-sensitive mutations in some genes lead to the formation of dauer larvae, the lifespan experiments involving *daf-2(e1370)* were performed shifting the temperature from 15 to 20 °C, the non-permissive temperature, at late L4/young adult stage¹. For lifespan analysis with no FUDr, a synchronous population was obtained by sodium hypochlorite treatment of gravid hermaphrodites to obtain eggs that were then raised on standard NGM plates. Late L4/young adult stage worms were transferred to fresh plates in the complete absence of FUDr every 2 days, while any of them were fertile. Survival was scored as described above.

Lifespan after different stress assays. Thermotolerance assays were performed as described²⁸. The worms were allowed to develop and grow on NGM agar plates at 20 °C until they reached late L4/young adult stage. Then, the worms were shifted to 34 °C as 5-day-old adults. In a typical experiment, NGM plates containing ~50 worms per plate were used. Single plates were removed (by triplicate) from the high temperature at the time intervals shown in the figures, and the worms were scored for signs of life as described in the 'Lifespan Analysis' above. Osmotic, metal and oxidative stress assays were performed as described. The worms were allowed to develop and grow on NGM agar plates at 20 °C until they reached late L4/young adult stage. Then, we transferred ~70 worms as 5-day-old adults from agar plates to each 24-well plate containing 200 mM NaCl (for osmotic stress), 50 µM cadmium (for metal stress), 25 mM H₂O₂ (for oxidative stress) and incubated the plates at 20 °C. At different time intervals, the worms were scored for signs of life as described in the 'Lifespan Analysis' above. To calculate the median survival time, each data set was fitted to a Boltzmann sigmoid curve; the average ± s.e.m. is presented in the figures.

Culturing bacteria from worms. The N2 *C. elegans* eggs were isolated using a solution of 10% commercial bleach and 1 N NaOH followed by four washes with M9 buffer (22 mM KH₂PO₄, 42 mM Na₂HPO₄, 85 mM NaCl and 1 M MgSO₄). Approximately 500 eggs were transferred to a 60 mm plate with NGM agar and incubated overnight at 20 °C with agitation to allow L1 larvae to emerge. Then, approximately 500 L1 larvae per experiment were grown for 48 h on NGM plates (a time that allows worm development to reach the L4 larvae stage) seeded with OP50 *E. coli* cells (1 × 10⁵ cells per plate) or spores (1 × 10⁵ spores per plate) of each *B. subtilis* strain. At different incubation times, 50 worms were transferred to Eppendorf tubes containing M9 buffer, and 1% Triton X-100. The worms were treated with 25 mM levamisole to induce temporal paralysis, superficially sterilized with 3% commercial bleach for 15 min and washed three times with M9 buffer. After the worms were surface sterilized, worms devoid of outside bacteria were disrupted using a pellet pestle (Sigma Co.), centrifuged and resuspended in 500 µl M9 buffer. Finally, 50 µl of each cell suspension was used to prepare serial dilutions of the bacteria before counting. To this end, 100 µl of the appropriate serial dilutions was spread with a Drigalski scraper on LB Petri dishes. The number of colony-forming units (CFUs) was determined after 24 h of incubation at 37 °C. To determine the number of spores, samples were heat-treated at 80 °C for 20 min before spreading. This treatment kills the vegetative cells, while the spore cells remain alive³³. The number of CFUs obtained before and after the heat treatment represents an estimation of the number of vegetative and spore cells, respectively, inside the worm.

β-Galactosidase assay. β-Galactosidase activity was assayed in *B. subtilis* cells harbouring *lacZ* fusions, and the specific activity was expressed in Miller Units (MU)³⁰. To determine gut-derived β-galactosidase activity, 1-day-old L4 worms were separately fed on NGM plates with domesticated and undomesticated *B. subtilis* that harboured the *p_{srf}-lacZ* reporter fusion. At different times, approximately 100 worms were taken from the NGM plates containing each

B. subtilis type, washed, disrupted and processed as indicated in ‘Culturing bacteria from worms’ to measure the β -galactosidase expression level of each worm extract.

Microscopic visualization of bacterial cells colonizing the nematode intestinal tract. Day 5 adult worms fed *B. subtilis* strains carrying an integrated *epsA::gfp* or *bslA::gfp* reporter fusion were pipetted out from plates using M9 buffer and 0.25 mM sodium azide (Sigma Co.) and covered with a glass coverslip. Bacterial colonization of the nematode digestive tract was observed using an Olympus FV1000 laser confocal scanning microscope. Images were analysed with Olympus software and Fiji software.

Bacterial pulse-chase experiment. Day 5 adult worms fed different *B. subtilis* strains (JH642 or NCIB3610) were washed and transferred to NGM plates containing the indicated new bacterial cells (that is, OP50, JH642 and/or NCIB3610) at a titre of 1×10^6 CFUs per plate as a new food source. At different times (indicated in the figure legends), the number of bacteria colonizing the worm intestine was calculated as described in the ‘Culturing bacteria from worms’.

Determination of NO and CSF. *B. subtilis* strains were grown under planktonic or biofilm-supporting conditions (with or without shaking, respectively) in MSgg³¹ or NGM²⁸ broth at 25 °C for 36 h. Then, the supernatants of each culture were taken and filter sterilized. Appropriate aliquots of each cell-free supernatant were assayed for the presence of NO-derived metabolites (NO₂⁻ and NO₃⁻) as reported previously²⁸. For determining the β -galactosidase activity driven from the *csf*-promoter, the cells were grown as a biofilm or planktonically, concentrated by centrifugation and treated as reported previously³⁰. The production levels of NO and CSF are expressed as μ mol and MU, respectively, per 1×10^8 CFUs counted from the cultures developed under planktonic and biofilm-supporting conditions.

Self-brood size and egg production rate. These experiments were performed essentially as described²⁸. The eggs from strain N2 nematodes were isolated, treated with hypochlorite and incubated for 20 h at 20 °C in S-buffer (0.5 M KH₂PO₄, 0.5 M K₂HPO₄ and 0.1 M NaCl). A synchronized population of L1 arrested worms was then placed on NGM agar plates seeded with OP50 *E. coli* or NCIB3610/JH642 *B. subtilis* cells. Five late L4/young adult stage animals were picked manually and transferred to a new plate. The worms were transferred twice a day to prevent overcrowding until egg laying ceased. The progeny was counted 3 days after removal of the parents. The experiment was performed in triplicate.

Postembryonic development and adult size. These experiments were performed as described previously²⁸. Strain N2 worms were grown on NGM agar plates seeded with OP50 *E. coli* or NCIB3610/JH642 *B. subtilis*. Unstaged eggs were placed at 20 °C and allowed to hatch for 4 h. Larvae that hatched during this period were placed singly on fresh plates and monitored every 5 h until they reached late L4/young adult stage. To measure the worm size, ~20 randomly picked worms fed OP50 *E. coli* or NCIB3610/JH642 *B. subtilis* cells were anaesthetized with sodium azide, straightened and photographed. Their length in pixels was then compared with a 1 mm scale bar.

Chemotaxis assay. Batches of 20 age-synchronized worms (late L4/young adult stage) were transferred to a plate containing lawns of OP50 *E. coli* or JH642 or NCIB3610 *B. subtilis* with a diameter of ~0.5 mm. The number of worms on each bacterial lawn was counted after 12 h of incubation at 20 °C and the choice index was calculated. Chemotaxis of an individual animal was measured by watching the tracks that they left on the agar. The choice index was calculated as follows:

Chemotaxis index CI: No. of worms in tested bacteria – No. of worms on OP50/Total number of used worms. If CI = (–1.0) represents complete preference for OP50 *E. coli*, (+1.0) represents complete preference for the test bacterium and (0.0) represents an equal distribution.

Statistical analysis. All assays were performed in at least duplicate or triplicate. Mean survival days, standard error, intervals of mean survival days with 95% confidence and equality *P* values to compare averages were calculated by log-rank and Kaplan–Meier tests using OASIS programme. Cox’ regression model was used to estimate the relative risk of worm death under the different *B. subtilis* treatments compared with the control group: $h_i(t) = h_0(t) \exp(\beta_1 x_{i1} + \beta_2 x_{i2} + \dots + \beta_k x_{ik})$, where $h_i(t)$ and $h_0(t)$ denote the conditional hazard and baseline hazard rates, respectively; β_i is the unknown parameter for treatment group; and x_i takes values 0 and 1, being an indicator variable for two samples, the control and treatment group. Figures concerning the obtained quantitative information were prepared by Sigma Plot 10.0 or OriginPro 8.0 programmes.

Data availability. The authors declare that all data supporting the findings of this study are available within the article and its Supplementary Information files, or are available from the corresponding author on reasonable request.

References

1. Kenyon, C. J. The genetics of aging. *Nature* **464**, 504–512 (2010).
2. Fontana, L., Partridge, L. & Longo, V. Extending healthy life span from yeast to humans. *Science* **328**, 321–328 (2010).
3. Kau, A. L., Ahern, P. P., Griffin, N. W., Goodmn, A. L. & Gordon, J. Human nutrition, the gut microbiota and the immune system. *Nature* **474**, 327–336 (2011).
4. Nicholson, J. K. *et al.* Host-gut microbiota metabolic interactions. *Science* **336**, 1262–1267 (2012).
5. Diaz Heijtz, R. *et al.* Normal gut microbiota modulates brain development and behavior. *Proc. Natl Acad. Sci. USA* **108**, 3047–3052 (2011).
6. ÓHara, A. M. & Shanahan, F. The gut flora as a forgotten organ. *EMBO Rep.* **7**, 688–693 (2006).
7. Clemente, J. C., Ursell, L. K., Parfrey, L. W. & Knight, R. The impact of the gut microbiota on human health: an integrative view. *Cell* **148**, 1258–1270 (2012).
8. Ottaviani, E. *et al.* Gut microbiota as a candidate for lifespan extension: an ecological/evolutionary perspective targeted on living organisms as metaorganisms. *Biogerontology* **12**, 599–609 (2011).
9. Thomas, C. M. & Versalovic, J. Probiotics-host communication: modulation of signaling pathways in the intestine. *Gut Microbes* **1–3**, 148–163 (2010).
10. Bischoff, S. C. Microbiota and aging. *Curr. Opin. Clin. Nutr. Metab. Care* **19**, 26–30 (2016).
11. Lee, J. *et al.* Evaluation of probiotic characteristics of newly isolated *Lactobacillus* spp. immune modulation and longevity. *Int. Food Microbiol.* **148**, 80–86 (2011).
12. Nakagawa, H. *et al.* Effects and mechanisms of prolongevity induced by *Lactobacillus gasseri* SBT2055 in *Caenorhabditis elegans*. *Aging Cell* **10**, e12431 (2013).
13. Grompone, G. *et al.* Anti-inflammatory *Lactobacillus rhamnosus* CNCMI-3690 strain protects against oxidative stress and increases lifespan in *Caenorhabditis elegans*. *PLoS ONE* **12**, e53493 (2012).
14. Cabrerio, F. & Gems, D. Worms need microbes too: microbiota, health and aging in *Caenorhabditis elegans*. *EMBO Mol. Med* **5**, 1–11 (2013).
15. Clark, L. & Hodgkin, J. Commensals, probiotics and pathogens in the *Caenorhabditis elegans* model. *Cell Microbiol.* **16**, 27–38 (2014).
16. Van Gestel, J., Vlamakis, H. & Kolter, R. Division of labor in biofilms: the ecology of cell differentiation. *Microbiol. Spectrum* **3**, MB-0002–MB-2014 (2015).
17. Liu, J. *et al.* Metabolic co-dependence gives rise to collective oscillations within biofilms. *Nature* **523**, 550–554 (2015).
18. Shapiro, J. A. Thinking about bacterial populations as multicellular organisms. *Annu. Rev. Microbiol.* **52**, 81–104 (1998).
19. Parsek, M. R. & Greenberg, P. E. Sociomicrobiology: the connections between quorum sensing and biofilms. *Trends Microbiol.* **13**, 27–33 (2005).
20. Bose, S. & Ghosh, A. K. Biofilms: a challenge to medical science. *J. Clin. Diag. Res* **5**, 127–139 (2011).
21. Williams, P. *Bacillus subtilis*: a shocking message from a probiotic. *Cell Host Microbe* **1**, 248–249 (2007).
22. Vidyalaxme, B., Rovetto, A., Grau, R. & Agrawal, R. Synergistic effects of probiotic *Leuconostoc mesenteroides* and *Bacillus subtilis* in malted ragi (*Eleusine corocana*) food for antagonistic activity against *V. cholerae* and other beneficial properties. *J. Food Sci. Technol* **51**, 3072–3082 (2014).
23. Grau, R. *et al.* A duo of potassium-responsive histidine kinases govern the multicellular destiny of *Bacillus subtilis*. *Mbio.* **6**, e00581 (2015).
24. Pedrito, M. E. *et al.* Spo0A links *de novo* fatty acid synthesis to sporulation and biofilm development in *Bacillus subtilis*. *Mol. Microbiol.* **87**, 348–367 (2013).
25. Vlamakis, H., Chai, Y., Beaugerard, P., Losick, R. & Kolter, R. Sticking together: building a biofilm the *Bacillus subtilis* way. *Nat. Rev. Microbiol.* **11**, 157–168 (2013).
26. Trejo, M. *et al.* Elasticity and wrinkled morphology of *Bacillus subtilis* pellicles. *Proc. Natl Acad. Sci. USA* **110**, 2011–2016 (2013).
27. Lombardia, E., Rovetto, A., Arabolaza, A. & Grau, R. A LuxS-dependent cell to cell language regulates social behavior and development in *Bacillus subtilis*. *J. Bacteriol.* **188**, 4042–4052 (2006).
28. Gusarov, I. *et al.* Bacterial nitric oxide extends the lifespan of *C. elegans*. *Cell* **152**, 818–830 (2013).
29. Kim, D. H. Bacteria and the aging and longevity of *Caenorhabditis elegans*. *Annu. Rev. Genet.* **47**, 233–246 (2013).
30. Arabolaza, A. *et al.* Characterization of a novel inhibitory feedback of the anti-anti-sigma SpoIIAA on Spo0A activation during development in *Bacillus subtilis*. *Mol. Microbiol.* **47**, 1251–1263 (2003).
31. Branda, S. S., González-Pastor, J. E., Ben-Yehuda, S., Losick, R. & Kolter, R. Fruiting body formation by *Bacillus subtilis*. *Proc. Natl Acad. Sci. USA* **98**, 11621–11626 (2001).
32. Mcloon, A., Guttenplan, S., Kearns, D., Kolter, R. & Losick, R. Tracing the domestication of a biofilm-forming bacterium. *J. Bacteriol.* **193**, 2027–2034 (2011).

33. Gottig, N. *et al.* The *Bacillus subtilis* SinR and RapA developmental regulators are responsible for inhibition of spore development by alcohol. *J. Bacteriol.* **187**, 2662–2672 (2005).
34. Laaberki, M.-H. & Dworkin, J. Death and survival of spore-forming bacteria in the *Caenorhabditis elegans* intestine. *Symbiosis* **46**, 95–100 (2008).
35. Laaberki, M.-H. & Dworkin, J. Role of spore coat proteins in the resistance of *Bacillus subtilis* spores to *Caenorhabditis elegans* predation. *J. Bacteriol.* **190**, 6197–6203 (2008).
36. Angeli, S. *et al.* A DNA synthesis inhibitor is protective against proteotoxic stressors via modulation of fertility pathways in *Caenorhabditis elegans*. *Aging* **5**, 759–769 (2013).
37. Westerheide, S. D., Anckar, J., Stevens, Jr S. M., Sistonen, L. & Morimoto, R. I. Stress-inducible regulation of heat shock factor 1 by the deacetylase SIRT1. *Science* **323**, 1063–1066 (2009).
38. Morley, J. F. & Morimoto, R. I. Regulation of longevity in *Caenorhabditis elegans* by heat shock factor and molecular chaperones. *Mol. Biol. Cell* **15**, 657–664 (2004).
39. Tam, N. K. *et al.* The intestinal life cycle of *Bacillus subtilis* and closest relatives. *J. Bacteriol.* **188**, 2692–2700 (2006).
40. Li, Y. *et al.* Effect of *Bacillus subtilis* CGMCC 1.1086 on the growth performance and intestinal microbiota of broilers. *J. Appl. Microbiol.* **120**, 195–204 (2015).
41. Lee, S. H. *et al.* Effects of dietary supplementation with *Bacillus subtilis* LS 1-2 fermentation biomass on growth performance, nutrient digestibility, cecal microbiota and intestinal morphology of weanling pig. *Anim. Feed Sci. Technol.* **188**, 102–110 (2014).
42. Iatsenko, I., Yim, J. J., Schroeder, F. & Sommer, R. J. *Bacillus subtilis* GS67 protects *C. elegans* from Gram-positive pathogens via fengycin-mediated microbial antagonism. *Curr. Biol.* **24**, 2720–2727 (2014).
43. Patrick, J. E. & Kearns, D. B. Laboratory strains of *Bacillus subtilis* do not exhibit swarming motility. *J. Bacteriol.* **191**, 7129–7193 (2009).
44. Rhee, K. J., Sethupathi, P., Driks, A., Lanning, D. K. & Knight, K. L. Role of commensal bacteria in development of gut-associated lymphoid tissues and preimmune antibody perspective. *J. Immunol.* **172**, 1118–1124 (2004).
45. Lievin-Le Moal, V. & Servin, A. L. The front line of enteric host defense against unwelcome intrusion of harmful microorganisms: mucins, antimicrobial peptides, and microbiota. *Clin. Microbiol. Rev.* **19**, 315–337 (2006).
46. Pukkila Worley, R. & Ausubel, F. M. Immune defense mechanism in the *Caenorhabditis elegans* intestinal epithelium. *Curr. Opin. Immunol.* **24**, 3–9 (2012).
47. Sifri, C. D., Begun, J. & Ausubel, F. M. The worm has turned microbial virulence modeled in *Caenorhabditis elegans*. *Trends Microbiol.* **13**, 119–127 (2005).
48. Rasamiravaka, T. *et al.* *Pseudomonas aeruginosa* biofilm formation and persistence, along with the production of the quorum sensing-dependent virulence factors, are disrupted by a triterpenoid coumarate ester isolated from *Dalbergia trichocarpa*, a tropical legume. *PLoS ONE* **10**, e0132791 (2015).
49. Tan, M. W. & Ausubel, F. M. *Caenorhabditis elegans*: a model genetic host to study *Pseudomonas aeruginosa* pathogenesis. *Curr. Opin. Microbiol.* **3**, 29–34 (2000).
50. Sifri, C. D., Begun, J., Ausubel, F. M. & Calderwood, S. B. *Caenorhabditis elegans* as a model host for *Staphylococcus aureus* pathogenesis. *Infect. Immun.* **71**, 2208–2217 (2003).
51. Begun, J. *et al.* Staphylococcal biofilm exopolysaccharide protects against *Caenorhabditis elegans* immune defenses. *PLoS Pathog.* **3**, e57 (2007).
52. Darby, C., Hsu, J. W., Ghori, N. & Falow, S. Plague bacteria biofilm blocks food intake. *Science* **417**, 243 (2002).
53. Stöver, A. G. & Driks, A. Secretion, localization, and antibacterial activity of TasaA, a *Bacillus subtilis* spore-associated protein. *J. Bacteriol.* **181**, 1664–1672 (1999).
54. Hobley, L. *et al.* BslA is a self-assembling bacterial hydrophobin that coats the *Bacillus subtilis* biofilm. *Proc. Natl Acad. Sci. USA* **110**, 13600–13605 (2013).
55. Sudhamsu, J. & Crane, B. R. Bacterial nitric oxide synthases: what are they good for? *Trends Microbiol.* **17**, 212–218 (2009).
56. Corker, H. & Poole, R. K. Nitric oxide formation by *Escherichia coli*. *J. Biol. Chem.* **278**, 31584–31592 (2003).
57. Bassler, B. L. & Losick, R. Bacterially speaking. *Cell* **125**, 237–246 (2006).
58. Ben Jacob, E., Becker, I., Shapir, Y. & Levine, H. Bacterial linguistic communication and social intelligence. *Trends Microbiol.* **12**, 366–372 (2004).
59. Werner, K. M., Perez, L. J., Ghosh, R., Semmelhack, M. F. & Bassler, B. I. *Caenorhabditis elegans* recognizes a bacterial quorum-sensing signal molecule through the AWC^{ON} neuron. *J. Biol. Chem.* **289**, 26566–26573 (2014).
60. Oh, S., Go, G. W., Mylonaskis, E. & Kim, Y. The bacterial signalling molecule indole attenuates the virulence of the fungal pathogen *Candida albicans*. *J. Appl. Microbiol.* **113**, 622–628 (2012).
61. Meisei, J., Panda, O., Mahanti, P., Schroeder, F. & Kim, D. H. Chemosensation of bacterial secondary metabolites modulates neuroendocrine signaling and behavior of *C. elegans*. *Cell* **159**, 267–280 (2014).
62. Lazazzera, B. A., Solomon, J. M. & Grossman, A. D. An exported peptide functions intracellularly to contribute to cell density signaling in *Bacillus subtilis*. *Cell* **89**, 917–925 (1997).
63. Fujiya, M. *et al.* The *Bacillus subtilis* quorum-sensing molecule CSF contributes to intestinal homeostasis via OCTN2, a host cell membrane transporter. *Cell Host Microbe* **1**, 299–308 (2007).
64. Brosseau, N., Andreev, E. & Ramontar, D. Complementation of the yeast model system reveals that *Caenorhabditis elegans* OCT-1 is a functional transporter of anthracyclines. *PLoS ONE* **10**, e0133182 (2015).
65. Apfeld, J. & Kenyon, C. Regulation of lifespan by sensory perception in *Caenorhabditis elegans*. *Nature* **402**, 804–809 (1999).
66. Chen, D., Pan, K. Z., Palter, J. E. & Kapahi, P. Longevity determined by developmental arrest in *Caenorhabditis elegans*. *Aging Cell* **6**, 525–533 (2007).
67. Bishop, N. A. & Guarente, L. Two neurons mediate diet-restriction-induced longevity in *C. elegans*. *Nature* **447**, 545–549 (2007).
68. Murphy, C. T. & Hu, P. J. Insulin/insulin-like growth factor signaling in *C. elegans*. *Wormbook.org* **26**, 1–43 (2013).
69. Hsu, A. L., Murphy, C. T. & Kenyon, C. Regulation of aging and age-related diseases by DAF-16 and heat-shock factor. *Science* **300**, 1142–1145 (2003).
70. Chiang, W.-C., Ching, T.-T., Lee, H. C., Mousigian, C. & Hsu, A.-L. HSF-1 regulators DDL-1/2 link insulin-like signaling to heat-shock responses and modulation of longevity. *Cell* **128**, 322–324 (2012).
71. Cho, I. & Blazer, M. The human microbiome at the interface of health and disease. *Nat. Rev. Genet.* **13**, 260–270 (2012).
72. Mackowiak, P. A. Recycling Metchnikoff: probiotics, the intestinal microbiome and the quest for long life. *Front. Pub. Health* **1**, 52 (2013).
73. Cutting, S. *Bacillus* probiotics. *Food Microbiol.* **28**, 214–220 (2011).
74. Hanifi, A. *et al.* Evaluation of *Bacillus subtilis* RO179 on gastrointestinal viability and general wellness: a randomized, double-blind, placebo-controlled trial in healthy adults. *Benef. Microbes* **6**, 19–27 (2015).

Acknowledgements

This work was supported by CONICET (Consejo Nacional de Investigaciones Científicas y Técnicas) and FONCYT (Fondo para la Investigación Científica y Tecnológica) with the aid of the Pew Latin-American Program in Biological Sciences (Philadelphia, PA, USA), the Fulbright Committee (Washington, DC, USA) and former Fundación Antorchas (Buenos Aires, Argentina). F.R.A., S.C. and C.B. are research fellows from FONCYT; and V.D., C.L. and J.G.C. are research fellows from CONICET. We also specially thank Hebe Botai and Liliana Racca (Departamento de Matemática y Estadística, Facultad de Ciencias Bioquímicas y Farmacéuticas, Universidad Nacional de Rosario) for the Cox statistical analysis.

Author contributions

R.G. designed all the experiments. V.D., S.C. and C.L. created all new strains. V.D., F.R.A., S.C. and C.B. conducted all the experiments. R.G., F.R.A. and S.C. analysed the data. G.C. and F.R.A. calculated the statistical data. R.G. and F.R.A. wrote the paper. C.B. corrected the manuscript.

Additional information

Supplementary Information accompanies this paper at <http://www.nature.com/naturecommunications>

Competing financial interests: The authors declare no competing financial interests.

Reprints and permission information is available online at <http://npg.nature.com/reprintsandpermissions/>

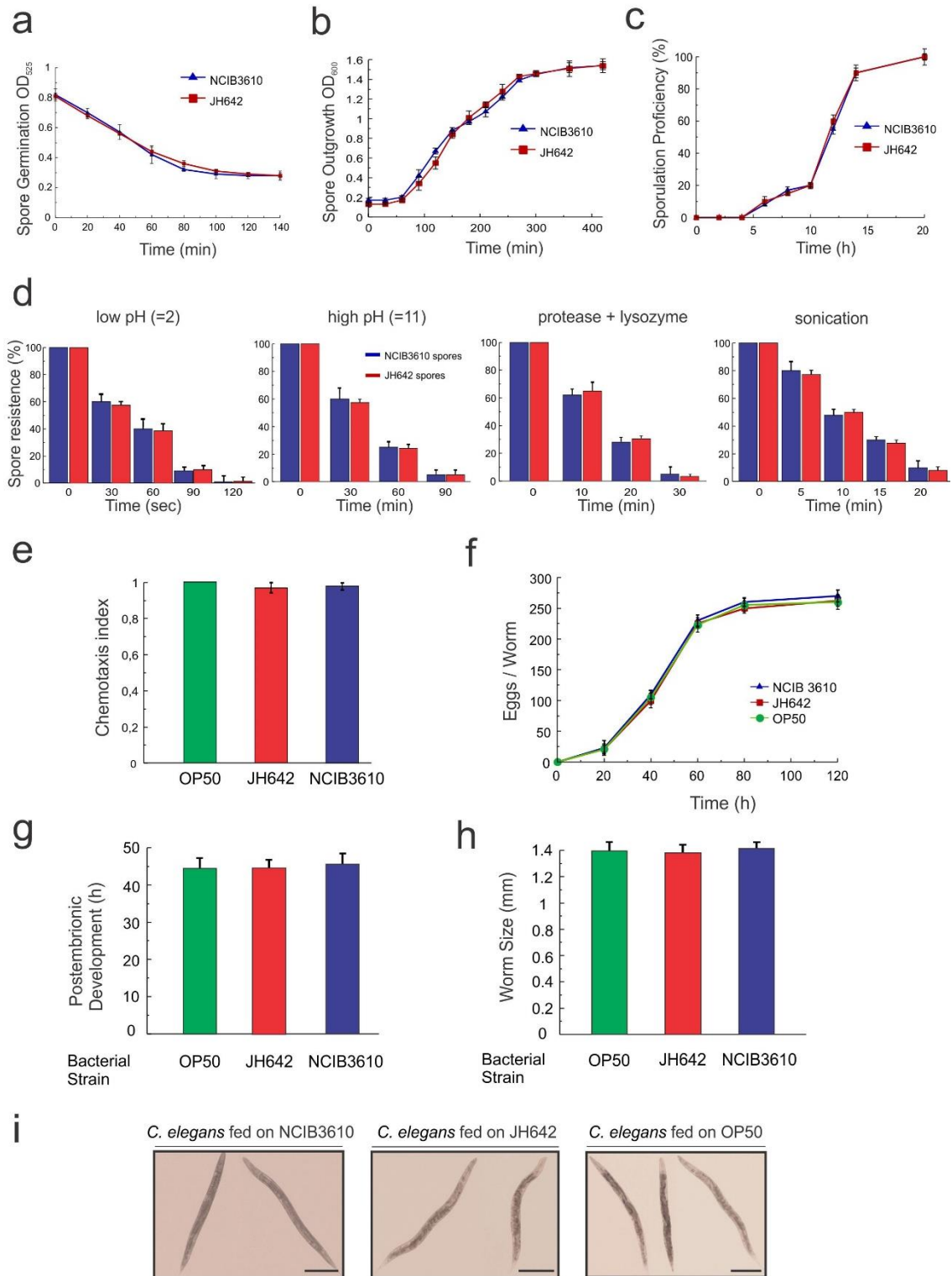
How to cite this article: Donato, V *et al.* *Bacillus subtilis* biofilm extends *Caenorhabditis elegans* longevity through downregulation of the insulin-like signalling pathway. *Nat. Commun.* **8**, 14332 doi: 10.1038/ncomms14332 (2017).

Publisher's note: Springer Nature remains neutral with regard to jurisdictional claims in published maps and institutional affiliations.



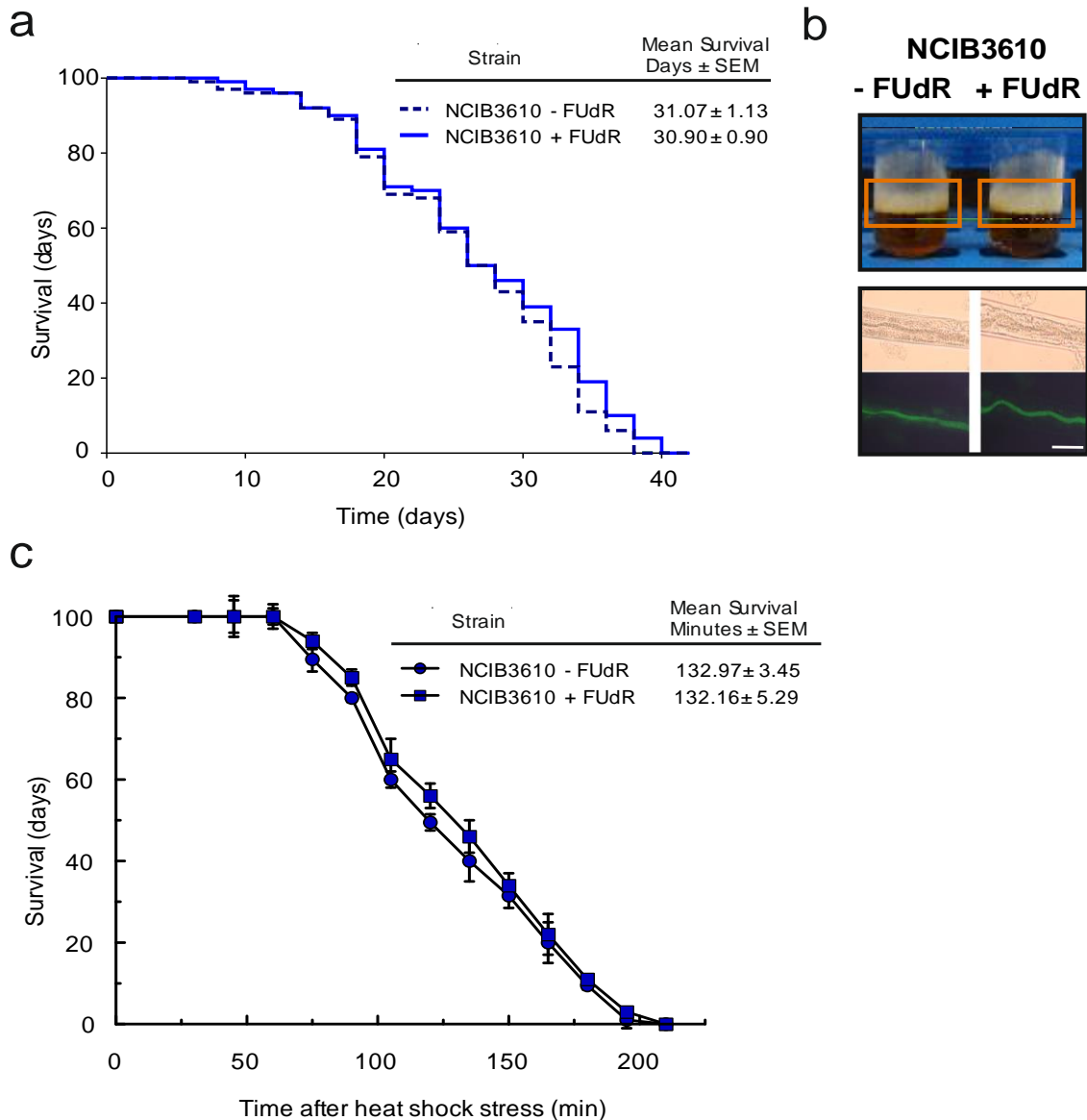
This work is licensed under a Creative Commons Attribution 4.0 International License. The images or other third party material in this article are included in the article's Creative Commons license, unless indicated otherwise in the credit line; if the material is not included under the Creative Commons license, users will need to obtain permission from the license holder to reproduce the material. To view a copy of this license, visit <http://creativecommons.org/licenses/by/4.0/>

© The Author(s) 2017



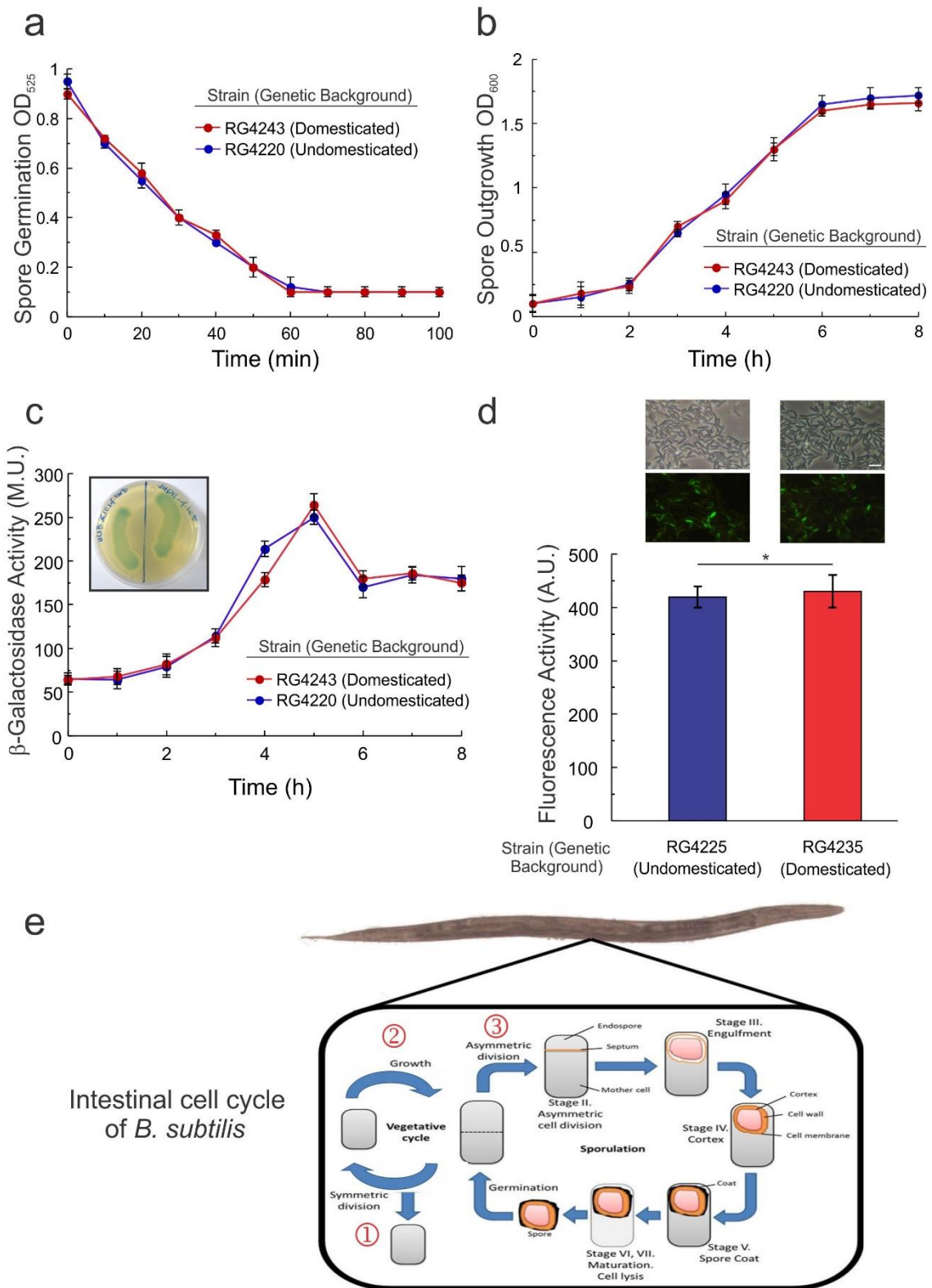
Supplementary Figure 1. Physiological parameters of bacterial growth and worm growth are not affected in spite of the use of different spore types. a) Germination rate of domesticated (JH642) and undomesticated (NCIB3610) *B. subtilis* spores in liquid NGM. Spore germination of JH642 (red squares) and NCIB3610 (blue triangles) *B. subtilis* was measured at 25 °C in presence of germination nutrients AFGK (10 mM L-alanine, 1 mM fructose, 1 mM glucose, and 10 mM potassium) as a decrease in optical density (loss of spore refractivity) at 525 nm. A representative experiment \pm SEM performed in triplicate is shown. b) Outgrowth of JH642 and NCIB3610 *B. subtilis* spores is not affected in liquid NGM. Spore outgrowth of JH642 (red squares) and NCIB3610 (blue triangles) *B. subtilis* was monitored at 600 nm. NGM was

supplemented with 0.5% glucose for the growth of both types of vegetative cells after spore germination plus 0.01% tryptophan and 0.01% phenylalanine for the growth of JH642 *B. subtilis*, after germination. A representative experiment \pm SEM performed in triplicate is shown. c) Sporulation proficiency of JH642 (red) and NCIB3610 (blue) cells⁴⁴ over growth at 25 °C in NGM broth. A representative experiment \pm SEM performed in triplicate is shown. d) Undomesticated and domesticated spores display similar physical, chemical and mechanic resistances against different stresses. Five milliliter of pure spore suspensions (1×10^5 CFU/mL) of the strains JH642 (domesticated) and NCIB3610 (undomesticated) were subjected to the different stresses shown in the graphs. Low and high pH values were reached with 1 M HCl and 0.5 M NaOH, respectively; protease + lysozyme treatment consisted of incubating the spores in the presence of proteinase K (1 mg/ml) plus lysozyme (1 mg/ml) and spore sonication was performed placing 0.2 μ m glass beads and spores in a tube and subjecting it to sonication in a Branson 1201 sonicating water bath at 60 W and 67 kHz. All treatments were incubated at 37 °C with gentle shaking (50 rpm), and at the time indicated in each graph, 0.5 ml of spore suspension was taken, washed, and spread on LB agar plates to quantify spore survival as indicated in the Methods. Percentage (%) of spore survival is relative to the value at time zero (100 % of survival) for each treatment. A representative experiment \pm SEM performed in triplicate is shown. e) Chemotactic behavior of N2 worms to *E. coli* or *B. subtilis* cells used as a food source. Briefly, age-synchronized late L4/young adult worms were transferred to plates containing 0.5 mm spots of OP50 *E. coli* or JH642 or NCIB3610 *B. subtilis*. The number of worms on each bacterial lawn was counted after 12 h of incubation at 20 °C, and the choice index was calculated as indicated in the “Methods”. The average of at least three independent experiments \pm SEM is shown. OP50 *E. coli* (green) was used as a control. f) *B. subtilis* strains do not alter the eggs laying rate or amount. Worms were fed either on JH642 (red squares) or NCIB3610 (blue triangles) *B. subtilis* and transferred twice a day to prevent overcrowding until egg laying ceased. The progeny was counted 3 days after parents were removed, and their numbers are shown as the mean \pm SEM from at least three experiments. OP50 *E. coli* (green circles) was used as a control. g) Domesticated and undomesticated *B. subtilis* do not affect postembryonic development. Eggs were allowed to hatch for 4 h and larvae were then placed individually on fresh NGM agar plates seeded with JH642 (red) or NCIB3610 (blue) *B. subtilis*. Worm growth was monitored every 5 h until they reached late L4/young adult stage. The mean number of h \pm SEM from at least three experiments is shown. OP50 *E. coli* (green) was used as a control. h, i) Domesticated and undomesticated *B. subtilis* do not affect worm size. Bar graph (h) shows the average length \pm SEM of 50 worms fed JH642 (red) or NCIB3610 (blue) *B. subtilis*. OP50 *E. coli* (green) was used as a control. (i) Worms were allowed to grow for an additional day after they reached late L4/young adult stage, and representative worms were photographed Scale bar = 300 μ m.



Supplementary Figure 2. The use of FUdR does not affect neither biofilm formation nor the lifespan and heat stress resistance of *C. elegans* conferred by undomesticated *B. subtilis*.

a) Late L4/young adult N2 worms were fed on NCIB3610 *B. subtilis* cells on NGM agar plates in the complete absence of FUdR (blue dashed line) or in the presence of 16 μ M FUdR (blue solid line) at 20 $^{\circ}$ C, and survival was monitored for signs of life as described in the “Methods” every 48 h. b) Biofilms of undomesticated *B. subtilis* strains were developed in liquid NGM in the presence or absence of 16 μ M FUdR for 24 h at 25 $^{\circ}$ C. The area delimited by the rectangles corresponds to the biofilm (or pellicle) formed at the interface between the liquid and air. Images shown on the bottom are epifluorescence micrographs of typically stained N2 *C. elegans* fed on *epsA-gfp*-expressing NCIB3610 *B. subtilis* strain in the absence or in the presence of 16 μ M FUdR. The fluorescence images were superimposed to differential interference contrast (DIC) images to depict the localization of the labels within the cells. Scale bar = 80 μ m. c) Synchronized N2 worm NGM agar plates were fed on NCIB3610 *B. subtilis* cells in the complete absence of FUdR (blue circle) or in the presence of 16 μ M FUdR (blue square) at 20 $^{\circ}$ C. As 5 days old adults, worm were shifted from 20 $^{\circ}$ C to 34 $^{\circ}$ C, and the mean survival was calculated as indicated in the “Methods”.



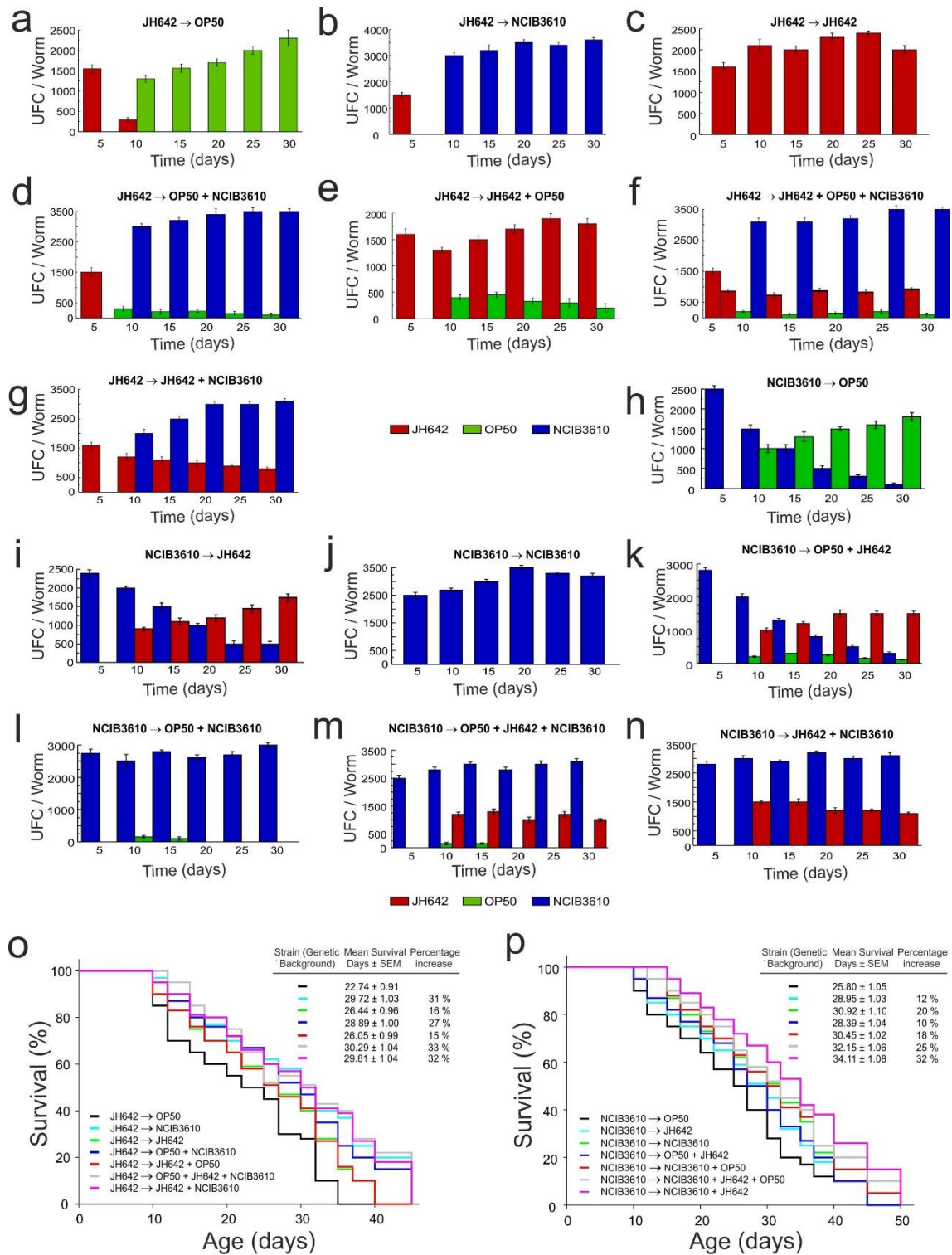
Supplementary Figure 3. a) Germination rate of spores of domesticated (RG4243) and undomesticated (RG4220) *B. subtilis*. Spore germination of RG4243 (red) and RG4220 (blue) *B. subtilis* was measured at 25 °C in the presence of the germination nutrients AFGK (10 mM L-alanine, 1 mM fructose, 1 mM glucose, and 10 mM potassium) as a decrease in optical density (loss of spore refractivity) at 525 nm. A representative experiment \pm SEM performed in triplicate is shown. b) Outgrowth of domesticated (RG4243) and undomesticated (RG4220) *B. subtilis*

spores is not affected in liquid NGM. Spore outgrowth of RG4220 (blue) and RG4243 (red) *B. subtilis* was monitored at 600 mm. Shown is a representative experiment \pm SEM from triplicate.

c) β -galactosidase expression driven by the *P_{srf}-lacZ* construct harbored in domesticated and undomesticated *B. subtilis*. Cultures of domesticated (RG4243, red) and undomesticated (RG4223, blue) *B. subtilis* cells were developed in liquid NGM at 25 °C with shaking. Every 12 h, 20 worms were taken, washed and disrupted. Determination of β -galactosidase activity was performed using worm extracts. The β -galactosidase activity, expressed as Miller units (MU) over time (h) is shown. The insert photograph shows the growth and β -galactosidase expression (blue color) of strains RG4220 (right) and RG 4243 (left) after 30 h of incubation at 25 °C in NGM-Xgal agar plate. After the cells were incubated, the cells were removed, resuspended in Z-buffer at a final concentration of 2×10^7 UFC/ml and assayed for β -galactosidase activity. The levels of β -galactosidase activity of strains RG4220 and RG4243 grew on solid NGM medium were $1,350 \pm 115$ MU and $1,425 \pm 130$ MU, respectively.

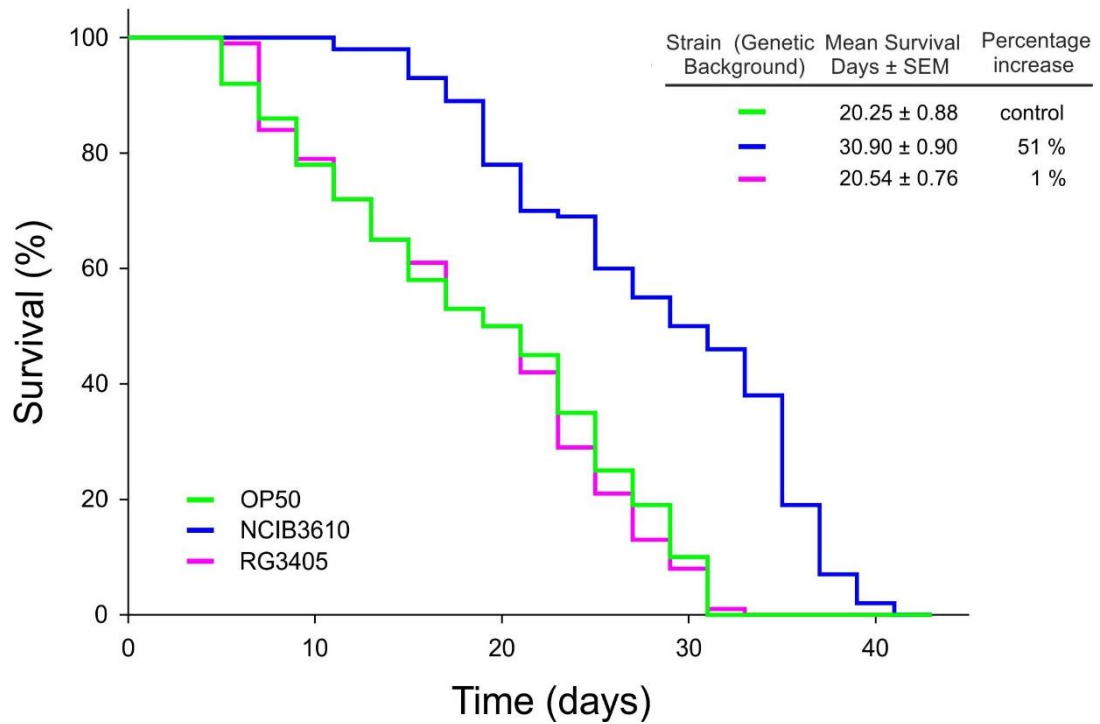
d) Fluorescence activity driven by domesticated and undomesticated *B. subtilis* strains harboring an ectopically integrated *epsA-gfp* fusion (Supplementary Table 1). The bacteria were planktonically grew at 25 °C on NGM agar plates supplemented with 0.5% glucose for the growth of both types of cells (RG4225 and RG4235) plus 0.01% tryptophan and 0.01% phenylalanine. After 24 h, bacteria were taken, washed resuspended and imaged by fluorescence microscopy as indicated in the Methods. Fluorescence intensity is indicated as arbitrary units (A.U.) per 1×10^5 bacterial cells, and error bars show the mean \pm SEM from at least three independent experiments. The inserts shown are epifluorescence micrographs of domesticated- and undomesticated *epsA-gfp* cells grown on solid NGM plates. Scale bar = 3.0 μ m. *P < 0.05 (ANOVA with Bonferroni test).

e) Worm intestinal cell cycle of *B. subtilis*. After spore germination (1), bacterial cells proliferate by vegetative cell division (symmetric division) that produces identical sister cells and growth (2). Starvation initiates sporulation where an asymmetric cell division (3) produces two cells of different size and cell destiny, the smaller forespore cell and the larger mother cell. The mother cell encloses and nurtures the forespore, deposits the protective spore coat, and eventually dies by lysis. The mature spore is released when the mother cell lyses and germinates under favorable conditions to start a new division cycle.

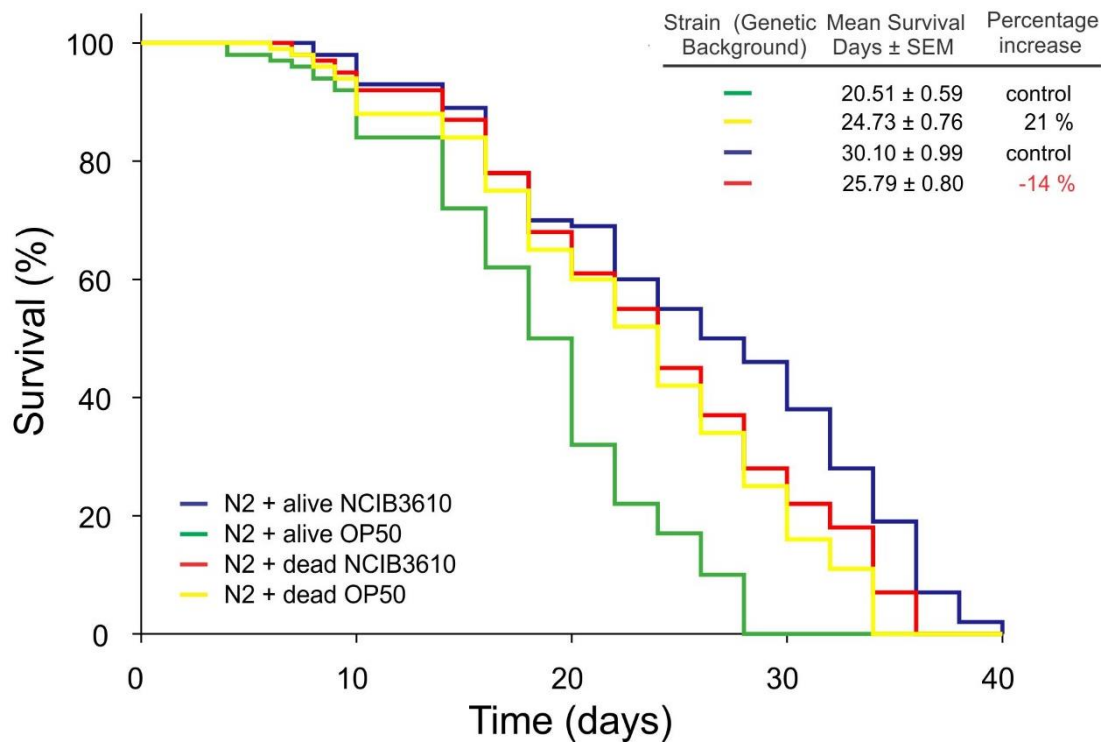


Supplementary Figure 4. Worm gut colonization and persistence. A large population of young *C. elegans* N2 (late L4/young adult stage) was synchronized and fed on a lawn of JH642 (graphs a-g) or NCIB3610 (graphs h-n) spores for five days. After this time (time “5” in the graphs), worms were washed and placed on 10 mm NGM agar plates containing either a lawn of spores of JH642 or NCIB3610 strains or OP50 cells or mixtures of OP50 + NCIB3610 or JH642 + OP50 or JH642 + OP50 + NCIB3610 cells as indicated in each graph and incubated at 20 °C. After the indicated incubation period, 100 worms were taken and disrupted as indicated in the Methods to quantify the number of bacterial cells of each type of strain present in the worm intestine. The differentiation between OP50, JH642 and NCIB3610 colonies (in the case of the use of bacterial

mixtures as worm food source) was established in the big differences in colony architecture between them. In addition to measuring bacterial gut colonization/persistence, worm survival (o-p) was measured as indicated in the "Methods". The presented results are representative of at least three independent experiments \pm SEM.



Supplementary Figure 5. Longevity of *C. elegans* fed on *B. subtilis* cells deficient in biofilm formation and CSF production. Late L4/young adult N2 worms were fed on spores of RG3405 *B. subtilis* cells ($\Delta bsIA\Delta csf$) on NGM agar plates at 20 °C, and survival was monitored every 48 h. The mean survival was calculated as indicated in the “Methods”. Worms fed on OP50 *E. coli* (green) and NCIB3610 (blue) *B. subtilis* were used as a control. The figure shows the average of at least three independent experiments \pm SEM, and the survival increase is expressed as the total number of worms fed on OP50 *E. coli*.



Supplementary Figure 6. Effects of alive and dead OP50 *E. coli* and NCIB3610 *B. subtilis* in *C. elegans* lifespan. Late L4/young adult N2 worms were fed either on alive (green) or dead (yellow) OP50 *E. coli* or alive (blue) or dead (red) NCIB3610 *B. subtilis* cells on NGM agar plates at 20 °C, and survival was monitored for signs of life as described in the “Methods” every 48 h. To obtain dead OP50 cells, the bacterial culture was heat-treated for 20 minutes at 80 °C to kill vegetative cells. To obtain dead NCIB3610 cells, the bacterial culture was heat-treated for 30 minutes at 121 °C (autoclaved) to kill spores. A representative experiment of at least three independent experiments \pm SEM is shown.

Bacterial strains	Relevant phenotype and/or genotype	Reference and/or source
OP50	<i>E. coli</i> strain commonly used to feed <i>C. elegans</i>	Caenorhabditis Genetic Center, CGS
JH642	<i>B. subtilis</i> domesticated strain	Laboratory collection (52)
NCIB3610	<i>B. subtilis</i> Marburg, undomesticated strain	Laboratory collection (49)
RG4365	<i>B. subtilis</i> natto, undomesticated strain	Laboratory collection (43)
RG4243	JH642 <i>srf-lacZ::amyE-cm^r</i>	Laboratory collection (39)
RG4220	NCIB3610 <i>srf-lacZ::amyE-cm^r</i>	This work, RG4243→NCIB3610 (DNA from donor strain → receptor strain)
NRS2289	<i>sacA::PbslA-gfpmut2-kn^r</i>	Laboratory collection (38)
YC164	pNGFP- <i>PespA-gfp-cm^r</i>	Laboratory collection (38)
RG4225	NCIB3610 <i>sacA::PbslA-gfpmut2-kn^r</i>	This work, NRS2289→NCIB3610
RG4235	JH642 <i>sacA::PbslA-gfpmut2-kn^r</i>	This work, NRS2289→JH642
RG3601	NCIB3610 Δ <i>tasA::spc^r</i>	Laboratory collection (26)
RG3602	NCIB3610 Δ <i>epsG::pBL601-spc^r</i>	Laboratory collection (26)
RG3603	NCIB3610 Δ <i>bslA::phe^r</i>	Laboratory collection (26)
RG3000	168 Δ <i>nos::ery^r</i>	Bacillus Genetic Stock Center (BGSC)
RG3610	NCIB3610 Δ <i>nos::ery^r</i>	This work, RG3000→NCIB3610
RG3620	NCIB3610 pNGFP- <i>PespA-gfp-cm^r</i>	YC164→NCIB3610
RG3621	NCIB3610 Δ <i>nos::ery^r</i> pNGFP- <i>PespA-gfp-cm^r</i>	YC164→RG3610
RG3622	NCIB3610 Δ <i>bslA::tc^r</i> pNGFP- <i>PespA-gfp-cm^r</i>	YC164→RG3603
RG3611	NCIB3610 Δ <i>nos::ery^r</i> / Δ <i>bslA::phe^r</i>	This work, RG3603→RG3610
RG3623	NCIB3610 Δ <i>nos::ery^r</i> / Δ <i>bslA::phe^r</i> pNGFP- <i>PespA-gfp-cm^r</i>	This work, YC164→RG3611
RG657	JH642 Δ <i>csf::tc^r</i>	Laboratory collection (102)
RG4010	NCIB3610 Δ <i>csf::tc^r</i>	This work, RG657→NCIB3610
RG3405	NCIB3610 Δ <i>bslA::phe^r</i> / Δ <i>csf::tc^r</i>	This work, RG4010→RG3603
LC3601	NCIB3610 Δ <i>nos::ery^r</i> / Δ <i>csf::tc^r</i>	This work, RG657→RG3610

LC3611	NCIB3610 $\Delta nos::tc^r / \Delta bslA::phe^r / \Delta csf::spc^r$	This work, RG4010 → RG3611
<i>C. elegans</i> strains	Relevant genotype	Reference and/or source
N2	Reference wt strain, isolated in Bristol, U.K.	Caenorhabditis Genetic Center, CGS
CB1370	<i>daf-2 (e1370)III</i>	Caenorhabditis Genetic Center, CGS
CF1038	<i>daf-16 (mu86) I</i>	Caenorhabditis Genetic Center, CGS
PS3551	<i>hsf-1 (sy441) I</i>	Caenorhabditis Genetic Center, CGS

Supplementary Table 1. Bacterial and *C. elegans* strains used in this work.

<i>C. elegans</i> strain	Related to figure	Type of stress	Bacterial strain (genetic background)	Repeats	Number of animals that died/total	Mean survival (^a days or ^b minutes)	Average of mean survivals \pm S.E.M. (^a days or ^b minutes)	Interval of average survival with 95 % (^a days or ^b minutes)	Average survival increase (%) / P value
N2	1a	None	OP50 (wt)	1	80/90	18.33 ^a	20.25 \pm 0.88 ^a	18.52 - 21.97 ^a	control
				2	98/100	21.53 ^a			
				3	99/99	20.89 ^a			
			JH642 (wt)	1	89/98	24.95 ^a	25.02 \pm 0.83 ^a	23.39 - 26.65 ^a	23.56 / 0.0004
				2	93/100	26.05 ^a			
				3	97/100	24.06 ^a			
			NCIB3610 (wt)	1	89/100	31.27 ^a	30.90 \pm 0.90 ^a	29.14 - 32.67 ^a	52.59 / 0
				2	87/100	30.95 ^a			
				3	94/100	30.48 ^a			
	1b	Temperature (34 °C)	OP50	1	50/50	34.50 ^b	34.91 \pm 1.04 ^b	32.88 - 36.94 ^b	control
				2	60/60	35.25 ^b			
				3	61/61	34.97 ^b			
			JH642	1	55/55	97.64 ^b	97.58 \pm 2.03 ^b	93.59 - 101.57 ^b	179.52 / 0
				2	60/60	97.5 ^b			
				3	57/57	97.6 ^b			
			NCIB3610	1	55/55	131.18 ^b	132.16 \pm 5.29 ^b	121.81 - 142.51 ^b	278.57 / 0
				2	50/50	133.20 ^b			
				3	52/53	132.10 ^b			
	1c	Osmotic (NaCl 200 mmol/L)	OP50	1	74/74	120.43 ^b	114.43 \pm 6.11 ^b	102.46 - 126.41 ^b	control
				2	75/76	116.90 ^b			
				3	70/70	105.96 ^b			
JH642			1	91/91	201.85 ^b	206.79 \pm 8.35 ^b	190.42 - 223.16 ^b	80.71 / 0	
			2	85/85	209.56 ^b				
			3	92/94	208.96 ^b				
NCIB3610			1	92/92	253.80 ^b	257.96 \pm 4.49 ^b	249.16 - 266.75 ^b	125.43 / 0	
			2	94/96	251.64 ^b				

			3	90/90	268.44 ^b			
1d	Metal (Cd ²⁺ 50 µmol/L)	OP50	1	71/71	45.13 ^b	46.66 ± 3.08 ^b	40.62 - 52.70 ^b	control
			2	65/65	47.76 ^b			
			3	69/69	47.09 ^b			
		JH642	1	108/108	79.78 ^b	80.18 ± 4.60 ^b	71.15 - 89.20 ^b	71.75 / 0.00000001
			2	110/110	73.88 ^b			
			3	107/107	86.88 ^b			
		NCIB3610	1	80/81	107.43 ^b	110.38 ± 5.18 ^b	100.23 - 120.53 ^b	136.56 / 0
			2	78/78	109.08 ^b			
			3	75/75	114.63 ^b			
1e	Oxidative (H ₂ O ₂ 25 mmol/L)	OP50	1	61/61	78.56 ^b	81.00 ± 3.69 ^b	73.77 - 88.23 ^b	control
			2	62/62	83.46 ^b			
			3	60/60	80.98 ^b			
		JH642	1	71/71	109.12 ^b	109.50 ± 4.36 ^b	100.96 - 118.04 ^b	35.19 /0.0000008
			2	70/70	104.85 ^b			
			3	71/71	114.53 ^b			
		NCIB3610	1	74/74	133.26 ^b	139.80 ± 5.25 ^b	129.51 - 150.09 ^b	72.59 / 0
			2	80/81	142.69 ^b			
			3	78/78	143.45 ^b			

Supplementary Table 2: Lifespan analysis related to Figure 1.

Undomesticated *B. subtilis* cells extend *C. elegans* survival under normal and stressful (thermal, osmotic, metal and oxidative) conditions. Each data set consists of three independent repeats fitted to Boltzmann sigmoid curve and the mean survival time ± SEM and the confidence interval (CI) are indicated. Percentage (%) survival change was determined against control OP50 *E. coli* cells under the same experimental condition (type of stress). Independent experimental and control analysis were done side by side and indicated by same number (1, 2, or 3) in the repeat column. *P*-values for each treatment were calculated against the correspondent control by Log-rank test. Survival data were calculated using Kaplan-Meier test.

<i>C. elegans</i> strain	Related to figure	Type of stress	Bacterial strain	FUdR	Repeats	Number of dead animals/total	Mean survival (days ^a /minutes ^b)	Average of mean survivals ± S.E.M. (days ^a /minutes ^b)	Interval of average survival with 95% (days ^a /minutes ^b)	Average survival increase (%)
N2	S2a	None	NCIB3610	-	1	99/100	30.88 ^a	31.07 ± 1.13 ^a	29.45 - 32.78 ^a	53.43
				-	2	98/100	31.36 ^a			
				-	3	93/100	31.29 ^a			
N2			NCIB3610	+	1	89/100	31.27 ^a	30.90 ± 0.90 ^a	29.14 - 32.67 ^a	52.59
				+	2	87/100	30.95 ^a			
				+	3	94/100	30.48 ^a			
N2	S2c	Temperature	NCIB3610	-	1	62/62	132.88 ^b	132.97 ± 3.45 ^b	124.52 - 143.48 ^b	280.89
				-	2	51/53	132.35 ^b			
				-	3	50/50	133.69 ^b			
N2			NCIB3610	+	1	55/55	131.18 ^b	132.16 ± 5.29 ^b	121.81 - 142.51 ^b	278.57
				+	2	50/50	133.20 ^b			
				+	3	52/53	132.10 ^b			

Supplementary Table 3. Undomesticated *B. subtilis* cells extend *C. elegans* survival and confer resistance to heat shock either in the presence or in the absence of FUdR. Each data set consists of three independent repeats fitted to Boltzmann sigmoid curve and the mean survival time ± SEM and the confidence interval (CI) are indicated. Percentage (%) survival change was determined against control OP50 *E. coli* cells under the same experimental condition (type of stress). Independent experimental and control analysis were done side by side and indicated by same number (1, 2, or 3) in the repeat column. Survival for each treatment was calculated against the correspondent control using Kaplan-Meier test.

<i>C. elegans</i> strain	Related to supplementary figure	First bacterial strain	Second bacterial strain (genetic background)	Repeats	Number of animals that died/total	Mean survival days	Average of mean survival days \pm S.E.M	Interval of average survival days with 95 %	Average survival increase (%)	
N2	4o	JH642	OP50 (wt)	1	100/100	26.79	22.74 \pm 0.91	20.96 - 24.52	control	
				2	92/100	19.43				
				3	100/100	22.00				
			JH642 (wt)	1	100/100	25.28	26.44 \pm 0.96	24.56 - 28.32	16.27	
				2	99/100	26.88				
				3	100/100	27.16				
			NCIB3610 (wt)	1	100/100	30.16	29.72 \pm 1.03	27.70 - 31.74	30.69	
				2	98/100	29.54				
				3	100/100	29.46				
			OP50 + NCIB3610	1	100/100	30.26	28.89 \pm 1.00	26.93 - 30.86	27.05	
				2	100/100	29.07				
				3	100/100	27.34				
			OP50 + JH642	1	96/100	26.42	26.05 \pm 0.99	24.12 - 27.98	14.56	
				2	100/100	26.00				
				3	100/100	25.73				
			OP50 + JH642 + NCIB3610	1	100/100	29.40	30.29 \pm 1.04	28.25 - 32.34	33.20	
				2	100/100	31.86				
				3	100/100	29.61				
	JH642 + NCIB3610	1	95/100	27.60	29.81 \pm 1.04	27.77 - 31.85	31.91			
		2	100/100	31.09						
		3	100/100	31.28						
				OP50	1	100/100	26.43	25.80 \pm 1.05	23.74 - 27.86	control
					2	100/100	24.64			
					3	98/100	26.33			
				JH642	1	100/100	30.00	28.95 \pm 1.03	26.94 - 30.97	12.21
					2	100/100	28.53			
					3	100/100	28.32			
NCIB3610				1	100/100	30.62	30.92 \pm 1.1	28.76 - 33.08	19.84	
				2	97/100	33.29				
				3	100/100	28.85				
OP50 +				1	100/100	29.64				

4p	NCIB3610	OP50 + JH642	2	100/100	26.83	28.39 ± 1.04	26.35 - 30.43	10.04
			3	95/100	28.70			
		OP50 + NCIB3610	1	100/100	31.26	30.45 ± 1.02	28.45 - 32.46	18.02
			2	100/100	29.21			
			3	100/100	30.88			
		OP50 + JH642 + NCIB3610	1	98/100	33.56	32.15 ± 1.06	30.08 - 34.22	24.61
	2		100/100	35.26				
	3		100/100	27.63				
	JH642 + NCIB3610	1	100/100	35.12	34.11 ± 1.08	32 - 36.22	32.21	
		2	100/100	33.26				
		3	100/100	33.95				

Supplementary Table 4. Lifespan analysis related to Supplementary Figure 4.

Undomesticated *B. subtilis* cells are better suited to colonize and persist in the gut of *C. elegans*. Each data set consists of three independent repeats fitted to Boltzmann sigmoid curve and the mean survival time ± SEM and CI are indicated. Percentage (%) survival change was determined against control worms fed on JH642 or NCIB3610 *B. subtilis* cells and shifted to the presence of OP50 *E. coli* cells. Independent experimental and control analysis were done side by side and indicated by same number (1, 2, or 3) in the repeat column. Survival data were calculated by Kaplan-Meier test.

<i>C. elegans</i> strain	Related to figure	Bacterial strain (genetic background)	Repeats	Number of animals that died/total	Mean survival days	Average of mean survival days \pm S.E.M.	Interval of average survival days with 95 %	Average survival increase (%)
N2	3b	OP50 (wt)	1	80/90	18.33	19.53 \pm 0.93	17.70 - 21.36	control
			2	79/95	21.36			
			3	88/93	18.90			
		NCIB3610 (wt)	1	96/105	30.68	31.00 \pm 0.89	29.25 - 32.75	58.73
			2	99/106	31.52			
			3	94/101	30.80			
		RG3601 (Δ tasA)	1	91/100	20.35	21.84 \pm 0.95	19.98 - 23.71	11.82
			2	93/99	22.01			
			3	99/101	23.16			
	RG3602 (Δ epsG)	1	89/100	22.86	22.90 \pm 0.83	21.28 - 24.52	17.26	
		2	95/100	22.78				
		3	98/101	23.06				
	RG3603 (Δ bslA)	1	89/100	23.76	23.26 \pm 1.07	21.16 - 25.36	19.10	
		2	97/101	22.79				
		3	98/100	23.23				
	3d	OP50	1	82/95	18.35	19.45 \pm 0.63	17.62 - 21.28	control
			2	90/95	21.05			
			3	92/98	18.95			
NCIB3610		1	103/105	32.06	31.28 \pm 0.88	29.08 - 33.42	60.82	
		2	92/102	30.68				
		3	98/104	31.10				
RG3601 + RG3602 + RG3603		1	88/95	30.05	29.59 \pm 1.05	27.52 - 31.65	52.13	
		2	98/99	29.48				
		3	99/100	29.24				

Supplementary Table 5. Lifespan analysis related to Figure 3.

Bacillus subtilis biofilm formation proficiency is required to extend the longevity of *C. elegans*. Each data set consists of three independent repeats fitted to Boltzmann sigmoid curve and the mean survival time \pm SEM and CI are indicated. Percentage (%) survival change of worms fed on wild-type or biofilm-deficient *B. subtilis* cells was determined against control worms fed on OP50 *E. coli* cells. Independent experimental and control analysis were done side by side and indicated by same number (1, 2, or 3) in the repeat column. Survival data were calculated by Kaplan-Meier test.

MEDIA	BACTERIAL STRAIN	GROWTH CONDITION	NO production (nitrate and nitrite mmol /1.0 X 10 ⁸ cells)
NGM	OP50	Aerobic	5.2 ± 0.7
NGM	OP50	Microaerophilic	132.5 ± 0.9
NGM	OP50	Anaerobic	24.9 ± 0.8

Supplementary Table 6. NO production proficiency of OP50 *E. coli* cells grown under different oxygen tensions. The OP50 strain was grown with shaking (180 rpm, aerobic condition), without shaking (microaerophilic condition) or in anaerobic jar (Oxoid-anaerogen 2.5L, anaerobic condition) in NGM broth at 25 °C for 36 h. Then, the supernatants of each culture were taken and filter sterilized. Appropriate aliquots of each cell-free supernatant were assayed for the presence of NO-derived metabolites (NO₂⁻ and NO₃⁻). Data are representative of at least three experiments made by triplicate.

<i>C. elegans</i> strain	Related to figure	Bacterial strain (genetic background)	Repeats	Number of animals that died/total	Mean survival days	Average of mean survival days + S.E.M.	Interval of average survival days with 95 %	Average survival increase (%)
N2	4a	OP50 (wt)	1	101/106	20.16	19.78 ± 0.94	17.93 - 21.63	control
			2	104/405	18.88			
			3	100/100	20.30			
		NCIB3610 (wt)	1	92/92	29.86	30.29 ± 0.88	28.26 - 32.33	53.13
			2	89/95	31.29			
			3	93/94	29.72			
		RG3610 (Δnos)	1	78/102	24.82	25.55 ± 1.14	23.31 - 27.79	29.17
			2	98/100	26.98			
			3	89/104	24.82			
		RG3603 ($\Delta bsIA$)	1	102/102	22.08	22.03 ± 0.97	20.13 - 23.94	11.38
			2	100/103	21.38			
			3	98/99	22.63			
		RG3611 ($\Delta nos \Delta bsIA$)	1	92/100	20.48	20.06 ± 0.79	18.52 - 21.60	1.42
			2	91/100	20.24			
			3	96/100	19.46			
		RG3610 + RG3603	1	92/98	29.73	29.51 ± 1.14	27.27 - 31.75	49.19
			2	89/96	29.47			
			3	92/100	29.33			

Supplementary Table 7. Lifespan analysis related to Figure 4.

Biofilm formation proficiency and NO production contribute to extend *C. elegans* longevity. Each data set consists of three independent repeats fitted to Boltzmann sigmoid curve and the mean survival time ± SEM and CI are indicated. Percentage (%) survival change of worms fed on wild-type or mutant (Δnos , $\Delta bsIA$, $\Delta nos \Delta bsIA$, or $\Delta nos + \Delta nos \Delta bsIA$) *B. subtilis* cells was determined against control worms fed on OP50 *E. coli* cells. Independent experimental and control analysis were done side by side and indicated by same number (1, 2, or 3) in the repeat column. Survival data were calculated by Kaplan-Meier test.

<i>C. elegans</i> strain	Relative to figure	Bacterial strain (genetic background)	Repeats	Number of animals that died/total	Mean survival days	Average of mean survival days \pm S.E.M.	Interval of average survival days with 95 %	Average survival increase (%)
N2	5a	OP50 (wt)	1	100/100	19.65	20.14 \pm 0.82	18.53 - 21.75	control
			2	87/100	22.06			
			3	100/100	18.71			
		NCIB3610 (wt)	1	100/102	31.06	30.74 \pm 0.94	28.9 - 32.58	52.63
			2	96/100	30.16			
			3	91/100	31.00			
		RG4010 (Δ csf)	1	100/103	25.86	26.16 \pm 0.89	24.41 - 27.91	29.89
			2	100/100	27.59			
			3	100/105	25.03			
		LC3601 (Δ nos Δ csf)	1	95/100	21.84	23.85 \pm 0.92	22.05 - 25.65	18.42
			2	85/100	25.06			
			3	93/100	24.65			
		LC3611 (Δ nos Δ bslA Δ csf)	1	92/100	19.68	18.79 \pm 0.63	17.55 - 20.03	- 6.70
			2	96/100	17.99			
			3	99/100	18.70			
	RG3611 (Δ nos Δ bslA) + RG4010 (Δ csf)	1	98/100	29.68	29.68 \pm 1.06	27.59 - 31.77	47.36	
		2	99/100	28.64				
		3	100/100	30.72				
	5b	OP50 (wt)	1	98/101	20.02	18.68 \pm 0.63	17.44 - 19.92	control
			2	95/100	18.81			
			3	100/100	17.21			
		NCIB3610 (wt)	1	100/100	27.98	30.10 \pm 0.99	28.15 - 32.05	61.13
			2	98/100	31.15			
			3	101/101	31.17			
		OP50 + CSF	1	98/102	24.27	23.98 \pm 0.94	22.14 - 25.82	28.37
			2	96/100	23.64			
			3	101/104	24.03			
5c	LC3611	1	100/103	17.15	16.06 \pm 1.09	13.93 - 18.19	control	
		2	101/101	16.05				
		3	105/105	14.98				
	RG3611	1	99/100	16.85	17.52 \pm 0.94	15.55 - 19.49	9.09	
		2	96/100	17.38				
		3	100/100	18.33				
	LC3611 + CSF	1	100/101	19.26	20.02 \pm 1.00	18.48 - 21.56	24.66	
		2	95/100	21.65				
		3	99/100	19.15				

Supplementary Table 8. Lifespan analysis related to Figure 5.

The quorum-sensing pentapeptide CSF extends *C. elegans* longevity. Wild-type and isogenic *B. subtilis* mutants strains (Δ bslA, Δ nos, Δ csf, Δ nos Δ csf, or Δ nos Δ bslA Δ csf) were used to feed wild-type N2 worms. Each data set consists of three independent repeats fitted to Boltzmann sigmoid curve and the mean survival time \pm SEM and CI are indicated. Percentage (%) survival change was determined against control OP50 *E. coli* (5a,b) or LC3611 *B. subtilis* (5c) cells, respectively. Independent experimental and control analysis were done side by side and indicated by same number (1, 2, or 3) in the repeat column. Survival data for each treatment, including endogenous (bacterial, 5a) or exogenous CSF treatments (5b,c), were calculated against the correspondent control using Kaplan-Meier test.

<i>C. elegans</i> strain (genetic background)	Bacterial strain (genetic background)	FUdR	Repeats	Number of dead animals/total	Mean survival (days)	Average of mean survivals \pm S.E.M. (days)	Interval of average survival with 95% (days)	Average survival increase (%)
N2 (wt)	NCIB3610	-	1	99/100	30.88	31.07 \pm 1.13	29.45 - 32.78	control
		-	2	98/100	31.36			
		-	3	93/100	31.29			
	NCIB3610	+	1	89/100	31.27	30.90 \pm 0.90	29.14 - 32.67	- 0.55
		+	2	87/100	30.95			
		+	3	94/100	30.48			
	RG3603 (Δ <i>bslaA</i>)	-	1	99/100	23.76	23.26 \pm 2.10	21.16 - 25.36	control
		-	2	98/100	22.79			
		-	3	93/100	23.23			
	RG3603 (Δ <i>bslaA</i>)	+	1	87/90	22.98	23.41 \pm 1.19	22.22 - 24.60	0.65
		+	2	57/59	23.56			
		+	3	63/65	23.69			
	RG3610 (Δ <i>nos</i>)	-	1	87/90	25.98	26.19 \pm 1.19	22.22 - 24.60	control
		-	2	57/59	26.56			
		-	3	63/65	26.69			
	RG3610 (Δ <i>nos</i>)	+	1	78/102	26.04	26.38 \pm 2.29	24.82 - 29.4	0.73
		+	2	98/100	27.11			
		+	3	89/104	25.98			
	RG4010 (Δ <i>csf</i>)	-	1	62/62	27.38	27.18 \pm 2.45	25.29 - 30.19	control
		-	2	51/53	27.02			
		-	3	50/50	27.14			
	RG4010 (Δ <i>csf</i>)	+	1	87/102	26.98	27.14 \pm 2.18	24.95 - 29.32	- 0.15
		+	2	99/99	27.11			
		+	3	99/105	27.33			
CF1038 (<i>daf-16</i>)	NCIB3610	-	1	78/78	17.17	17.17 \pm 1.45	15.72 - 18.62	control
		-	2	82/82	17.23			
		-	3	81/81	17.12			
	NCIB3610	+	1	98/100	17.37	17.34 \pm 1.98	15.85 - 18.74	0.99
		+	2	72/75	17.44			
		+	3	89/102	17.22			
	RG3603 (Δ <i>bslaA</i>)	-	1	62/62	14.85	14.69 \pm 1.45	14.12 - 15.36	control
		-	2	51/53	14.98			
		-	3	50/50	14.25			
	RG3603 (Δ <i>bslaA</i>)	+	1	86/99	13.95	14.91 \pm 0.87	14.04 - 15.78	0.15
		+	2	80/99	14.65			
		+	3	100/100	16.13			
	RG3610 (Δ <i>nos</i>)	-	1	79/82	26.25	26.41 \pm 1.44	29.45 - 32.78	control
		-	2	68/68	26.98			

		-	3	73/80	25.99			
	RG3610 (Δnos)	+	1	86/87	26.08	26.33 \pm 1.76	24.57 - 28.09	- 0.30
		+	2	95/95	26.48			
		+	3	86/87	26.43			
		-	1	98/100	26.78			
	RG4010 (Δcsf)	-	2	95/95	26.56	26.82 \pm 2.45	25.02 - 28.68	control
		-	3	50/52	27.12			
		+	1	89/92	26.34			
	RG4010 (Δcsf)	+	2	95/95	26.98	26.80 \pm 1.84	24.96 - 28.64	- 0.075
		+	3	105/102	27.08			
		-	1	100/106	17.45			
	NCIB3610	-	2	95/100	17.97	17.47 \pm 1.34	16.45 - 17.78	control
		-	3	102/102	16.99			
		+	1	100/100	17.44			
	NCIB3610	+	2	100/101	16.05	17.35 \pm 1.17	16.18 - 18.52	- 0.68
		+	3	97/99	18.56			
		-	1	62/62	14.35			
	RG3603 ($\Delta bsIA$)	-	2	51/53	14.89	14.68 \pm 1.45	13.89 - 15.28	control
		-	3	50/50	14.80			
		+	1	100/102	15.18			
	RG3603 ($\Delta bsIA$)	+	2	97/100	14.69	14.72 \pm 1.07	13.65 - 15.79	0.27
		+	3	100/100	14.29			
		-	1	99/100	16.58			
PS3551 (<i>hsf-1</i>)	RG3610 (Δnos)	-	2	98/99	16.39	16.36 \pm 2.03	15.10 - 17.65	control
		-	3	101/101	16.10			
		+	1	100/106	18.49			
	RG3610 (Δnos)	+	2	95/100	15.94	16.21 \pm 1.23	14.98 - 17.44	- 0.92
		+	3	102/102	15.20			
		-	1	74/74	16.89			
	RG4010 (Δcsf)	-	2	77/78	15.99	16.47 \pm 1.40	15.52 - 17.48	control
		-	3	97/97	16.54			
		+	1	99/100	16.64			
	RG4010 (Δcsf)	+	2	98/100	17.04	16.55 \pm 1.01	15.35 - 17.75	0.49
		+	3	100/101	15.97			

Supplementary Table 9. The use of 16 μ M FUdR does not affect N2, *daf-16* and *hsf-1* worm survival fed on wild-type or mutant (RG3603 $\Delta bsIA$, RG3610 Δnos , RG4010 Δcsf) *B. subtilis* cells. Each data set consists of three independent repeats fitted to Boltzmann sigmoid curve and the mean survival time \pm SEM and CI are indicated. Independent experimental and control analysis were done side by side and indicated by same number (1, 2, or 3) in the repeat column. Survival data for each treatment was calculated against the correspondent control using Kaplan-Meier test.

COVARIATE	GENE	B	SE	WALD	SIGNIFICANCE
NO	<i>nos</i>	0.65113	0.09154	50.5936	<0.0001
CSF	<i>csf</i>	0.55610	0.09113	37.2422	<0.0001
BIOFILM	<i>bslA</i>	0.99936	0.08236	147.2493	<0.0001
NO/CSF	<i>nos-csf</i>	-0.40379	0.15923	6.4305	0.0112
NO/BIOFILM	<i>nos-bslA</i>	-0.24010	0.15314	2.4581	0.1169
BIOFILM/CSF	<i>nos-csf</i>	-0.21552	0.15280	1.9894	0.1584
NO/CSF/BIOFILM	<i>nos-csf-bslA</i>	0.32385	0.25167	1.6559	0.1982

EFFECT OF	HAZARD RATIO EXP(B)	95.0 % CI for <u>LOW</u> to <u>HIGH</u>
BIOFILM DEFICIENCY ($\Delta bslA$)	2.45	2.18 to 2.75
NO DEFICIENCY (Δnos) when <i>csf</i> ACTIVE when <i>csf</i> INACTIVE	1.76 1.31	1.52 to 2.03 1.08 to 1.59
CSF DEFICIENCY (Δcsf) when <i>nos</i> ACTIVE when <i>nos</i> INACTIVE	1.61 1.20	1.40 to 1.86 0.99 to 1.46

Supplementary Table 10. Semiparametric Cox regression analysis¹⁻³ of *B. subtilis* genes that positively affect *C. elegans* survival. The time until death of worms (n = 300 worms per each lifespan experiment) fed on *B. subtilis*

cells harboring active (present) or inactive (absent) genes promoting worm longevity (covariates, *nos*, *csf*, *bslA*, *nos-csf*, *bslA-nos*, *csf-bslA* and *nos-csf-bslA*) was analyzed using Cox regression. B is the unstandardized regression coefficient and its standard error (SE), its Wald test significance value (Wald), and the significance determined when the other covariates were set to their mean values. Hazard ratio, $\text{Exp}(B)$, for the categorical covariates of interest is the risk of worm death relative to the control case-controlling for other covariates¹⁻³. The 95% confidential interval (CI) of the hazard ratio is indicated.

<i>C. elegans</i> strain	Relative to figure	Bacterial strain (genetic background)	Status	Repeats	Number of animals that died/total	Mean survival days	Average of means survival days \pm S.E.M.	Interval of average survival days with 95 %	Average survival increase (%)
N2	S6	OP50	live	1	50/51	21.22	20.51 \pm 0.59	19.35 - 21.67	control
				2	30/32	19.25			
				3	27/29	21.16			
			dead	1	45/48	25.16	24.73 \pm 0.76	23.23 - 26.23	20.58
				2	25/30	24.08			
				3	36/40	24.95			
		NCIB3610	live	1	100/102	29.86	30.10 \pm 0.99	28.15 - 32.05	control
				2	106/107	30.23			
				3	92/92	30.21			
			dead	1	42/43	25.14	25.79 \pm 0.8	24.22 - 27.36	- 14.32
				2	30/33	26.12			
				3	25/25	26.11			

Supplementary Table 11. Lifespan analysis related to Supplementary Figure 6.

Only alive *B. subtilis* cells are able to prolong *C. elegans* longevity. Each data set consists of three independent repeats fitted to Boltzmann sigmoid curve and the mean survival time \pm SEM and CI are indicated. Percentage (%) survival change of worms fed on dead OP50 *E. coli* cells or dead NCIB3610 *B. subtilis* cells was determined against control worms fed on live OP50 *E. coli* cells or live NCIB3610 *B. subtilis* cells, respectively. Independent experimental and control analysis were done side by side and indicated by same number (1, 2, or 3) in the repeat column. Survival data were calculated by Kaplan-Meier test.

<i>C. elegans</i> strain	Related to figure	Bacterial strain (genetic background)	Repeats	Number of animals that died/total	Mean survival days	Average of mean survival days \pm S.E.M.	Interval of average survival days with 95 %	Average survival increase (%) / P value
CF1038 (<i>daf-16</i>)	6a	OP50 (wt)	1	80/81	13.83	13.87 \pm 0.52	12.85 - 14.89	control
			2	96/96	13.88			
			3	90/92	13.90			
		NCIB3610 (wt)	1	77/78	17.17	17.17 \pm 0.74	15.72 - 18.62	23.79 / 0.00005
			2	82/82	17.23			
			3	75/81	17.12			
		JH642 (wt)	1	80/80	15.43	15.60 \pm 0.68	14.27 - 16.93	12.47 / 0.098
			2	80/84	15.70			
			3	105/114	15.68			
PS3551 (<i>hsf-1</i>)	6b	OP50	1	80/80	10.86	11.97 \pm 0.58	10.83 - 13.11	control
			2	82/82	12.05			
			3	90/90	13.00			
		NCIB3610	1	80/80	17.95	16.25 \pm 0.60	15.08 - 17.42	35.76 / 0
			2	70/70	16.32			
			3	76/78	14.48			
		JH642	1	84/84	14.17	13.85 \pm 0.56	12.76 - 14.94	15.71 / 0.0011
			2	80/80	13.71			
			3	85/86	13.67			

Supplementary Table 12. Lifespan analysis related to Figure 6.

The transcription factors DAF-16 and HSF-1 are necessary for the prolongevity effect of *B. subtilis* on *C. elegans*. Each data set consists of three independent repeats fitted to Boltzmann sigmoid curve and the mean survival time \pm SEM and CI are indicated. Percentage (%) survival change of wild-type (N2), *daf-16* (CF1038) or *hsf-1* (PS3551) worms fed on wild-type domesticated (JH642) or undomesticated (NCIB3610) *B. subtilis* cells was determined against worms (wild-type, *daf-16* or *hsf-1*) fed on control OP50 *E. coli* cells. Independent experimental and control analysis were done side by side and indicated by same number (1, 2, or 3) in the repeat column. P-values for each treatment were calculated against the correspondent control by Log-rank test. Survival data were calculated using Kaplan-Meier test.

<i>C. elegans</i> strain	Related to figure	Bacterial strain (genetic background)	Repeats	Number of animals that died/total	Mean survival days	Average of mean survival days ± S.E.M.	Interval of average survival days with 95 %	Average survival increase (%) / P value
N2	7a	NCIB3610 (wt)	1	100/102	29.86	30.10 ± 0.99	28.15 - 32.05	control
			2	106/107	30.23			
			3	92/92	30.21			
		RG3603 (Δ <i>bsIA</i>)	1	93/94	23.16	22.17 ± 0.56	21.07 - 23.27	- 26.35 / 0
			2	95/95	22.00			
			3	96/96	21.35			
		RG3610 (Δ <i>nos</i>)	1	86/87	26.08	26.33 ± 0.90	24.57 - 28.09	- 12.52 / 0.0016
			2	95/95	26.48			
			3	86/87	26.43			
		RG4010 (Δ <i>csf</i>)	1	100/100	26.34	26.80 ± 0.94	24.96 - 28.64	- 10.96 / 0.0037
			2	100/100	26.98			
			3	105/102	27.08			
CF1038 (<i>daf-16</i>)	7b	NCIB3610	1	98/100	17.89	17.55 ± 0.74	16.48 - 18.62	control
			2	94/100	17.34			
			3	97/101	17.42			
		RG3603	1	86/99	13.95	14.91 ± 0.44	14.04 - 15.78	- 15.04 / 0.00000002
			2	80/99	14.65			
			3	100/100	16.13			
		RG3610	1	99/99	15.89	15.85 ± 0.5	14.67 - 17.03	- 9.69 / 0.307
			2	98/109	15.38			
			3	100/100	16.28			
		RG4010	1	96/99	15.68	16.37 ± 0.59	15.20 - 17.54	- 6.72 / 0.545
			2	100/100	17.85			
			3	100/101	15.58			
PS3551 (<i>hsf-1</i>)	7c	NCIB3610	1	100/100	17.44	17.35 ± 0.50	16.18 - 18.52	control
			2	100/101	16.05			
			3	97/99	18.56			
		RG3603	1	100/102	15.18	14.72 ± 0.55	13.65 - 15.79	- 15.16 / 0.038
			2	97/100	14.69			
			3	100/100	14.29			
		RG3610	1	100/106	18.49	16.21 ± 0.63	14.98 - 17.44	- 6.57 / 0.1907
			2	95/100	15.94			
			3	102/102	15.20			
		RG4010	1	99/100	16.64	16.55 ± 0.61	15.35 - 17.75	- 4.61 / 0.3124
			2	98/100	17.04			
			3	100/101	15.97			

Supplementary Table 13. Lifespan analysis related to Figure 7.

Each *B. subtilis* pro longevity property (NO/CSF production and biofilm formation proficiency) requires DAF-16 and HSF-1 functionality. The showed data set consists of three independent repeats fitted to Boltzmann sigmoid curve and the mean survival time ± SEM, *p*-value and CI are indicated. Percentage (%) survival change of wild-type (N2), *daf-16* (CF1038) or *hsf-1* (PS3551) worms fed on the different *B. subtilis* mutant cells (Δ *bsIA*, Δ *nos*, or Δ *csf*) was determined against worms (wild-type, *daf-16* or *hsf-1*) fed on control NCIB3610 (wild-type) *B. subtilis* cells. Independent experimental and control analysis were done side by side and indicated by same number (1, 2, or 3) in the repeat column. *P*-values for each treatment were calculated against the correspondent control by Log-rank test. Survival data were calculated using Kaplan-Meier test.

<i>C. elegans</i> strain	Related to figure	Bacterial strain (genetic background)	Repeats	Number of animals that died/total	Mean survival days	Average of mean survival days \pm S.E.M.	Interval of average survival days with 95 %	Average survival increase (%) / P value
CB1370 (<i>daf-2/e1370</i>)	8a	OP50 (wt)	1	79/80	32.7	31.82 \pm 1.68	28.84 -35.10	control
			2	97/98	31.37			
			3	100/106	31.38			
		NCIB3610 (wt)	1	74/74	37.62	34.84 \pm 1.81	31.26 - 38.39	9.49 / 0.663
			2	77/78	37.74			
			3	97/97	32.16			

Supplementary Table 14. Lifespan analysis related to Figure 8.

The prolongevity effect of *B. subtilis* on worm survival requires an active insulin-like signaling pathway. *daf-2* (CB1370) worms were grown at 15 °C with OP50 *E. coli* cells as food source until worms reached late L4/young adult stage. At this developmental time worms were taken, washed and shifted to 20 °C in the presence of OP50 *E. coli* cells or NCIB3610 *B. subtilis* cells as new food sources. The average survival increase was determined considering worms fed on OP50 *E. coli* cells as control. Each data set consists of three independent repeats fitted to Boltzmann sigmoid curve and the mean survival time \pm SEM, *p*-value and CI are indicated. Independent experimental and control analysis were done side by side and indicated by same number (1, 2, or 3) in the repeat column. *P*-values for each treatment were calculated against the correspondent control by Log-rank test. Survival data were calculated using Kaplan-Meier test.